



MANTAROBOT™ TELEME 2

User Guide And Operating Manual



MantaroBot™

20410 Century Boulevard • Suite 120 • Germantown Maryland 20874

www.MantaroBot.com • info@mantarobot.com

Phone 301 528 2244 • Fax 301 528 1933

Table of Contents

1	Checking the contents of your shipment.....	7
2	Knowing your MantaroBot TeleMe 2 and its limits	8
2.1	Overview	9
2.2	Moving or Shipping the MantaroBot	10
2.3	WARNINGS	11
3	Getting Started.....	13
3.1	Attaching the Mast and Device Holder	13
3.2	Attaching the Device Holder	13
3.3	Powering On.....	14
3.4	Powering Off	14
3.5	Charging	15
3.5.1	Charging TeleMe	15
3.5.2	Charging User Device	15
4	First-Time Setup and Configuration Mode	16
4.1	Configure User Device:.....	17
4.1.1	Single Wifi Radio Solution	17
4.1.2	Multi-Wifi Radio Solution.....	18
5	MantaroBot Software	20
5.1	Robot Application Overview	20
5.2	Controller Application Overview.....	20
6	Robot Application	21
6.1	TeleMe Main Page	21
6.2	Network Selection Page (sub-menu)	23
6.3	Wifi Profile Editor (sub-menu)	25
6.4	User Administration (sub-menu)	26
6.5	Advanced Settings (sub-menu)	27

MantaroBot™

20410 Century Boulevard • Suite 120 • Germantown Maryland 20874

www.MantaroBot.com • info@mantarobot.com

Phone 301 528 2244 • Fax 301 528 1933

6.6	About (sub-menu).....	29
6.7	Upgrading the Software.....	30
7	Controller Application.....	31
7.1	Remote PC / Mac Requirements / Web-browser	31
7.2	Installation & Upgrades	32
7.3	MantaroBot Contact List Configuration.....	32
7.3.1	Creating MantaroBot Contact List	34
7.3.1.1	Configure MantaroBot TeleMe Using WebRTC	35
7.3.1.2	Configure MantaroBot TeleMe for MantaroBot Communications Service	38
7.3.1.3	Configure MantaroBot TeleMe for Direct Socket Connection.....	40
7.3.2	Editing MantaroBot Contact List.....	41
7.4	Connecting to a MantaroBot (using Skype as Audio/Video Conferencing Application).....	41
7.4.1	The First Time or after Software Updates.....	41
7.4.2	Normal Operation	42
7.5	Connecting to a MantaroBot (using Other as the Audio/Video Conferencing Application)	43
7.6	Controlling a MantaroBot	44
7.6.1	Drive Motor Control Pad.....	44
7.6.1.1	Driving MantaroBot	44
7.6.1.2	Proximity IR Sensors.....	45
7.6.2	Camera Control	46
7.6.2.1	Pan/Tilt.....	46
7.6.2.2	Memory Positions	47
7.6.3	Laser Pointer	48
7.6.4	Charging User Device	48
7.6.5	LED Headlights	49
7.7	Options – Settings.....	49
7.7.1	User Administration	49

MantaroBot™

20410 Century Boulevard • Suite 120 • Germantown Maryland 20874

www.MantaroBot.com • info@mantarobot.com

Phone 301 528 2244 • Fax 301 528 1933



7.7.2	Robot Settings	52
7.7.3	Controller Settings	53
7.7.4	Change Password	54
7.8	Options – Help / About / Accessories	55
7.8.1	Help	55
7.8.2	About.....	55
7.8.3	Accessories.....	56
7.9	Miscellaneous	57
7.9.1	Connection Delay	57
7.9.2	Battery Indicator	57
7.9.3	Wifi Meter	58
8	Using 3 rd Party Accessories	59
8.1	Bluetooth® Headset	59
8.2	Joystick	59
9	Maintenance	60
9.1	Battery Maintenance	60
9.2	Replacing the Battery.....	60
10	Warranty	61
11	Appendix A.....	63
11.1	Keyboard Mapping.....	63
11.2	Joystick Mapping.....	63


MantaroBot™

20410 Century Boulevard • Suite 120 • Germantown Maryland 20874

www.MantaroBot.com • info@mantarobot.com

Phone 301 528 2244 • Fax 301 528 1933

Version	Date	Change Summary
1.0	04/24/2015	- Initial Customer Release.
1.1	03/29/2016	- Minor edits for clarification.

Note: New or significantly modified features from previous versions in the future will be marked as 

Trademark Information

Skype is a trade mark of Skype or its related companies. This product / application has not been checked, verified, certified or otherwise approved or endorsed by Skype, Skype Communications S.a.r.l. or any of their related companies.

Skype, associated trademarks and logos and the “S” logo are trademarks of Skype.

Android is a trademark of Google Inc.

Apple, Mac, iPad, iPhone, FaceTime are trademarks of Apple Inc., registered in the U.S. and other countries.

Microsoft, Windows and DirectX are registered trademarks of Microsoft Corporation in the United States and/or other countries.

Samsung and Galaxy Tab are trademarks of Samsung Electronics Co., Ltd. and/or its related entities.

DISCLAIMER

MantaroBot will not be held responsible for misuse or improper assembly of the telepresence robot that results in damage or harm to the robot itself, the user device (tablet or smartphone), other people or the surroundings in which the robot is used.

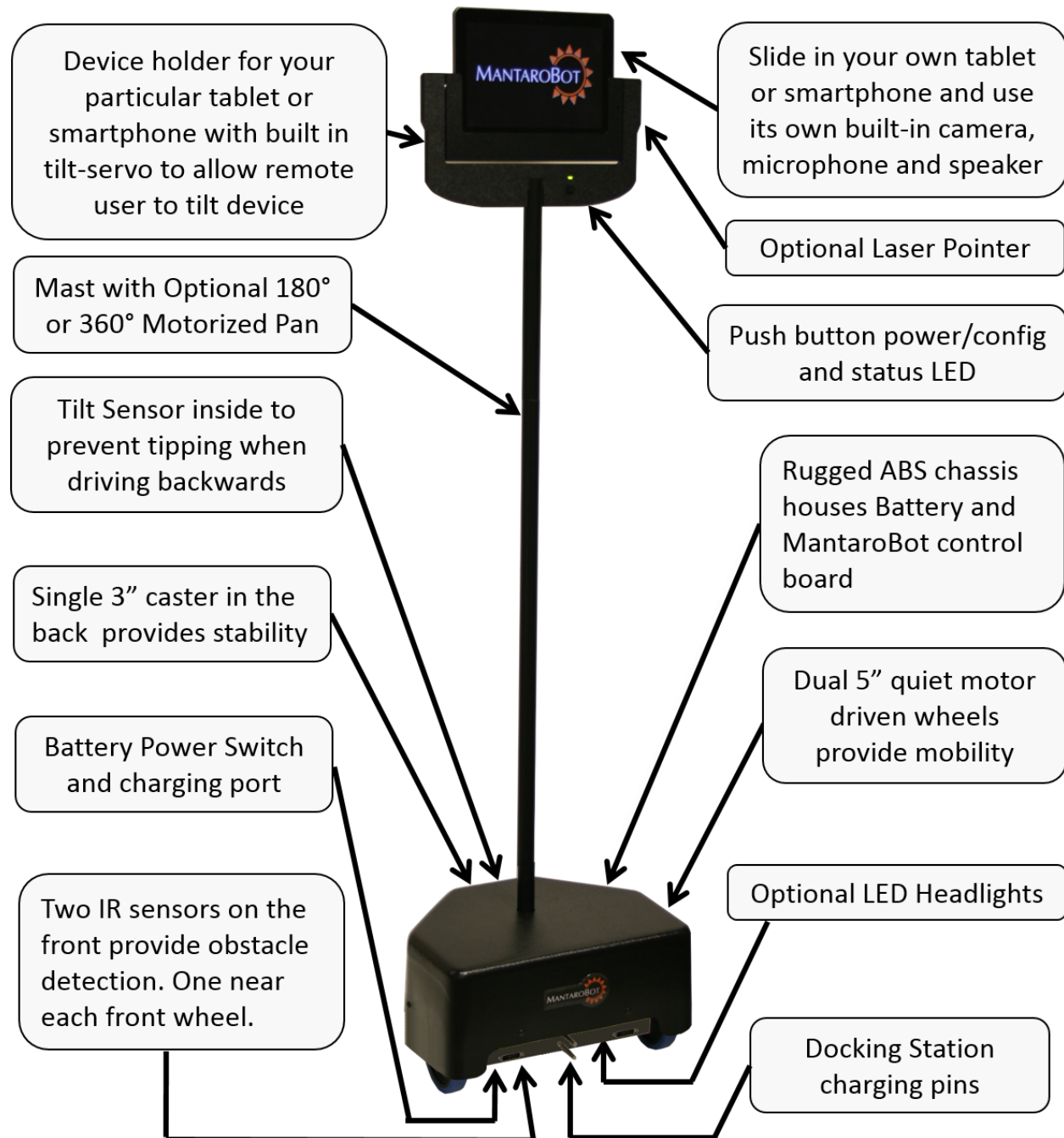
Thank you for purchasing a MantaroBot TeleMe 2. Please read the contents of this User Guide completely before using your MantaroBot. The TeleMe 2 may be referred to simply as TeleMe or MantaroBot TeleMe (without the 2) in this document.

1 Checking the contents of your shipment

The following items should be in your shipment(s):

1. MantaroBot TeleMe 2 base and user device holder
2. Mast extension 30" long
3. AC/DC Power Adapter (Battery Charger)
4. A CD containing:
 - a. The MantaroBot TeleMe 2 User Guide (this document)
 - b. The MantaroBot TeleGo User Guide
 - c. The TeleMe 2 Assembly Instructions & Quick Start Guide
 - d. The MantaroBot Controller Application
 - e. The MantaroBot Docking Station User Guide
 - f. The MantaroBot TeleMe Robot Application Update Instructions guide
 - g. TeleMe Packing Instructions
5. Information sheet
6. Other accessories that you may have purchased may also be included in the same shipment.

2 Knowing your MantaroBot TeleMe 2 and its limits



MantaroBot™

20410 Century Boulevard • Suite 120 • Germantown Maryland 20874

www.MantaroBot.com • info@mantarobot.com

Phone 301 528 2244 • Fax 301 528 1933

2.1 Overview

The diagram above shows the hardware features of the MantaroBot. Each of these features is discussed below.

Device Holder – A holder specifically designed to accept the user’s tablet or smartphone (**user device**) and function as the “head” of the MantaroBot with its integrated camera, microphone, and speaker. The holder is comprised of a stationary holder and a bezel that holds the user device.

Video and Audio – The MantaroBot TeleMe utilizes the integrated camera, microphone and speakers of the user device to provide the teleconferencing capability. The resolution of the video image and audio quality will depend on the quality of your tablet or smartphone and the communications link quality. To accommodate slower link speeds or network congestion, the video quality may be automatically reduced in resolution by the teleconferencing application that you are using.

Tilt Mechanism – The user device holder has a built-in tilt servo mechanism which allows the end user to tilt up/down the entire tablet/smartphone to provide a wide viewing range.

Battery Power Switch – The Battery Power Switch (rocker style) is located on the front grill at the bottom of the TeleMe 2 near the right wheel. It is used to connect and disconnect the battery power in the MantaroBot. This switch should be placed in the OFF position when the MantaroBot is shipped or stored. When in normal use the switch should be in the ON position.

Power ON/OFF and Configuration Mode Button and LED Status Indicator – The push button and green LED located on the front of the holder directly below the user’s device is used to turn the MantaroBot TeleMe 2 on or off (provided either the Battery Power Switch is ON or the TeleMe is plugged into the external charger). When the button is pressed a single time it will toggle the power state ON/OFF. When first powered ON, the LED light will turn on and blink while the TeleMe is booting up and connecting to WiFi. Once the boot up process is done, ascending tones will be heard. When a WiFi connection is established the LED will be on solid. To place the TeleMe 2 into Configuration Mode, quickly double-press the push button. In configuration mode the LED will blink (repeating pattern: two blinks and a pause).

Mast with 180° or 360° Motorized Pan Mechanism – Factory available option. The optional pan capability allows the remote user to rotate the user device in the device holder to look left and right without having to turn the entire robot. This makes looking left and right faster and easier and is also useful in aiming the optional Laser Pointer. With the 360° option, the user has the ability to look all the way behind as well.

MantaroBot™

20410 Century Boulevard • Suite 120 • Germantown Maryland 20874

www.MantaroBot.com • info@mantarobot.com

Phone 301 528 2244 • Fax 301 528 1933



Laser Pointer -- Factory available option. The laser pointer is mounted in the holder and can be pointed and controlled by the remote user using the camera tilt and optional pan functions.

LED Headlights -- Factory available option. The LED headlights are mounted at the base of the front of the TeleMe 2 and can be toggled between different brightness levels. The headlights are very useful for driving at night when the room lights may be off.

19.5V Charging Input – The Charging Input is located on the front grill at the bottom of the TeleMe 2 near the right wheel. The MantaroBot should be plugged into the charger whenever it is not in use. The TeleMe 2 can be used in a call while plugged in, but care must be taken to disconnect the charger before it is driven away.

Docking Station Charging Pins – Two pins are located at the front of the motor bracket that allow the MantaroBot to be charged in the optional Docking Station. No voltage is present on these pins unless it is connected to the Docking Station.

Tilt Sensor – Inside the MantaroBot there is a tilt sensor that will stop the MantaroBot from moving if the user is driving backwards (and into an obstacle) that causes it to tip forward. A message on the Controller application status bar will also be displayed.

IR Sensors – There are two forward looking obstacle sensors on the MantaroBot that alert the user of obstacles in front of the MantaroBot. One of the sensors is located near the left wheel and one is located near the right wheel. If an obstacle is detected a red area will appear in the TeleMe Control Application and the forward speed of the TeleMe will be reduced.

2.2 Moving or Shipping the MantaroBot

To relocate the MantaroBot manually, lift the MantaroBot by its mast or roll it on its rear caster wheel. It is not recommended that the MantaroBot be moved manually while resting its drive wheels on the ground. The TeleMe2 drive wheels cannot be turned manually and will not turn if the robot is pushed. To transport or ship the MantaroBot, power off the TeleMe as described in Section 3.4. Disassemble and pack the TeleMe into its original shipping box as described in the “TeleMe Packing Instructions” document included in the CD that was shipped with your TeleMe.

NOTE: The optional extended battery (LiFePO4) is restricted from being shipped on passenger airplanes.

MantaroBot™
20410 Century Boulevard • Suite 120 • Germantown Maryland 20874
www.MantaroBot.com • info@mantarobot.com
Phone 301 528 2244 • Fax 301 528 1933

2.3 WARNINGS

USER DEVICE INSTALLATION – PLEASE ensure that the user device (i.e. tablet or smartphone) is plugged all the way into the device holder and is fully mated with the docking connector inside the bottom of the device holder. If a landscape holder was purchased for a user device (e.g. iPad) that has the charging connector on the short side (normally designed for charging in portrait orientation), please insure the lock on the back of the holder is turned to the lock position. Improper installation could result in your device falling out of the holder and breaking!!!

TIPPING HAZARD – The remote operator is responsible for keeping the MantaroBot under control. The MantaroBot has been designed to reduce the potential of tipping during normal operation. Rapid accelerating and stopping or sharp turns while moving at full speed may cause the MantaroBot to tip over and cause injury. Note that the risk of tipping increases with the weight of the tablet that is used in the holder. If you have purchased a Tablet weighing more than 20 ounces additional care should be taken such as reducing the acceleration setting in the controller.

INCLINES – The MantaroBot is intended for indoor applications on level ground. Inclines of more than 10 degrees may cause the MantaroBot to tip over.

DRIVING IN REVERSE – It is not recommended that the MantaroBot be driven in reverse for more than a short distance. The camera cannot be faced to see in the rearward direction (unless the TeleMe 2 has the mast with optional 360° motorized pan). It is recommended that the MantaroBot be turned around and driven forward in the direction desired whenever possible. The MantaroBot is more susceptible to tipping when driven in reverse.

STEPS AND STAIRS – Great care should be taken to avoid driving the MantaroBot down stairs or steps. The camera should be aimed in the direction that the robot is moving and aimed down such that obstacles can be readily seen.

CAMERA VIEW – It is the remote user's responsibility to have an awareness of where the MantaroBot is being driven. It is recommended that the camera on the user's device be tilted down such that obstacles can be readily seen when driving the MantaroBot.

NETWORK DELAY – The video coming from the camera and the robot control commands may travel through the network with varying amounts of delay. Due to the varying delays, the video you are viewing may not represent the current location of the TeleMe. Network delays can cause commands that are sent to the MantaroBot to be buffered and delivered at a later time. When network delays exceed one second great care is required by the operator to ensure that the TeleMe remains in control.

MantaroBot™

20410 Century Boulevard • Suite 120 • Germantown Maryland 20874

www.MantaroBot.com • info@mantarobot.com

Phone 301 528 2244 • Fax 301 528 1933



SECURITY – The MantaroBot has user level password control to help prevent unauthorized access. However Skype and other video conferencing applications can be configured to various levels of permission for accepting calls as well. It is recommended that you review the Call Settings for the video conferencing application in use on your tablet or smartphone.

3 Getting Started

3.1 Attaching the Mast and Device Holder

The MantaroBot TeleMe is shipped from the factory with a short connector tube where the mast is attached and an 8 pin electrical connector that provides control and power to the holder and user device. To attach the mast and device holder please refer to the TeleMe Assembly Instructions that were provided with the shipment.

3.2 Attaching the Device Holder

Device holders are available for several models of tablets and smart phones. To ensure that the device fits properly in the device holder, make sure that the device holder is the correct model for your device. Do not attempt to forcefully push, slide, or wedge any device into a device holder, as this will likely result in damage to either the device holder or tablet or smart phone.

Check the MantaroBot website (www.mantarobot.com) for the list of currently available device holders and the device models that they are designed to fit. If the device you would like to use is not listed please email us at info@mantarobot.com.

Standard Holders:

To install the user device into the device holder, orient the device with the charging connector port facing towards its mating connector and the screen and camera facing the front of the MantaroBot. This will ensure that the device is oriented properly, and will properly connect to the charging connector. If a landscape holder was purchased for a device that has the charging connector on the short side there will be additional steps for installing the device. See below.

iPad Holders (landscape) and Galaxy TAB S:

Slide the device all the way down in the holder with the charging connector facing the right side. Once the device is all the way down, slide it to the right until it is fully seated into the charging connector. Then rotate the lock on the back of the holder into the lock position. (NOTE: The locked position will not prevent the user from removing the user device if they pull up on it. It is only intended to prevent the user device from sliding to the left and falling out during operation).

Surface Pro 3:

Slide the device all the way down in the holder with the charging connector facing the right side. Slide the two finger tabs on the back of the holder towards the tablet to connect the charging connector and USB 3.0 connector to the tablet.

PLEASE ensure that the user device (i.e. tablet or smartphone) is plugged all the way into the device holder and is fully mated with the docking connector inside the bottom or side of the device holder (and lock is in lock position if your device holder has one). Improper installation could result in your device falling out of the holder and breaking!!!

3.3 Powering On

The battery power switch (rocker style) is located on the front grill at the bottom of the TeleMe 2 near the right wheel. Toggle the switch to the ON position. This will connect the TeleMe's internal battery and allow it to supply power to the robot. This switch should be placed in the OFF position when the MantaroBot is shipped or stored. When in normal use the switch should remain in the ON position.

To power on your TeleMe press the push button on the front of the device holder. A single beep will be heard and the LED will turn on and blink. The TeleMe will take approximately 30 seconds to boot up. Once the boot up process is complete, the TeleMe will make a series of ascending tones. Now wait until the LED is lit solid indicating that a successful Wifi connection was established. If the LED status indicator is blinking fast (faster than during the boot up process) many times followed by a pause, the TeleMe needs to be configured for use with a wireless network. To configure the robot for a wireless network see Section 4.

3.4 Powering Off

To turn the TeleMe OFF, press the button on the device holder. A series of tones will be heard indicating the button was pressed and the LED will blink while the robot is powering down. Once the robot is OFF the LED will be off as well. The battery power switch can also be turned off but it is not necessary unless the robot is being shipped or stored. NOTE: For normal operation, the TeleMe should remain in the ON position (LED on) during charging. See Section 3.5 for more information.

MantaroBot™

20410 Century Boulevard • Suite 120 • Germantown Maryland 20874

www.MantaroBot.com • info@mantarobot.com

Phone 301 528 2244 • Fax 301 528 1933

3.5 Charging

3.5.1 Charging TeleMe

The TeleMe contains an internal rechargeable battery. To charge the battery use one of the following methods:

1. Manually plug the supplied charger into the 19.5V charging input located underneath the rear of the TeleMe.
2. Drive the TeleMe into the optional charging docking station such that the two pins located at the bottom front of the TeleMe plug into the dock.

IMPORTANT NOTE: For the battery charging level to be recorded properly, the TeleMe should be in the Powered ON state with the LED on the device holder being green. If the TeleMe is charged while being Powered OFF no damage will occur, however, the charging level indicator on the controller application will be incorrect. To correct, allow the battery to fully discharge through normal use, and then allow it to fully charge while ensuring the TeleMe is in the Powered ON state as described above.

IMPORTANT NOTE: Please review Section 9.1 on Battery Maintenance.

3.5.2 Charging User Device

The user device, while plugged into the device holder of the TeleMe, can be charged using one of the following methods:

1. Whenever the TeleMe is connected to the supplied charger or connected to the charging docking station, the user device will also be charged.
2. When the TeleMe is not being charged the user device will not be charged as well. However, while in a call, the remote user has the option of allowing the TeleMe's internal battery to charge the user device. See Section 7.6.4 for more information.

NOTE: The user device may or may not charge as quickly in the TeleMe as it may with the charger that came with your user device.

4 First-Time Setup and Configuration Mode

The MantaroBot comes equipped with a Wifi adapter that must be configured to a network prior to use.

The following steps describe configuring of the TeleMe base for use in a Wifi network when it has not already been previously configured OR the network that it is configured for is no longer accessible.

Note: Your network must have a connection that will allow use of Skype or your chosen audio/video conferencing application. Secure closed networks are also supported.

ENTERING CONFIGURATION MODE:

1. Power ON the MantaroBot TeleMe as described in Section 3.3. Wait some time for the LED on the device holder to either be lit solid on (configured for a Wifi network) or blink fast many times followed by a pause (not configured for a Wifi network).
2. Double-press quickly the push-button switch located on the user device holder at the top of the TeleMe 2. After a few moments, there should be an audible series of beep-tones indicating the button was pressed. The LED will be solid on until either the TeleMe enters Configuration Mode successfully or fails. If the TeleMe enters Configuration Mode successfully the LED will blink (repeating pattern: two blinks and a pause). If it does not, the LED will blink fast many times followed by a pause (same sequence as when TeleMe is powered and has no Wifi connection). If the TeleMe does not go into Configuration Mode, power off the TeleMe and go back to Step 1.
3. Using a Wifi capable tablet, smartphone, or a computer, browse for available wireless connections in your area. Make sure the computer or device's Wifi is enabled, and then look for the connection named "MantaroBot-TeleMe_<#>". The <#> at the end of the name will be the digits at the end of the TeleMe device's serial number. Select this connection. It is open/unsecure and requires no password credentials to connect. This is a wireless access point (network) hosted by the TeleMe itself and will be used only temporarily for configuration.
4. Once the Wifi connection is established, open a web browser on the device used in Step 3 above, type <http://192.168.0.1> in the address bar, and hit Enter. The browser will show the MantaroBot TeleMe main page webpage. Note: On this wireless network that is hosted by the TeleMe in Configuration Mode, the above IP address will always be the same.

CONFIGURING WIFI ADAPTER:

5. See Section 6.2 for these steps. Once those steps are completed return back to this section and continue forward to configure the user device that will plug into the TeleMe as the head.

CHECK ADVANCED SETTINGS:

6. All of the advanced settings of the TeleMe are configured in the factory. To verify or modify these settings see Section 6.5.

MantaroBot™

20410 Century Boulevard • Suite 120 • Germantown Maryland 20874

www.MantaroBot.com • info@mantarobot.com

Phone 301 528 2244 • Fax 301 528 1933

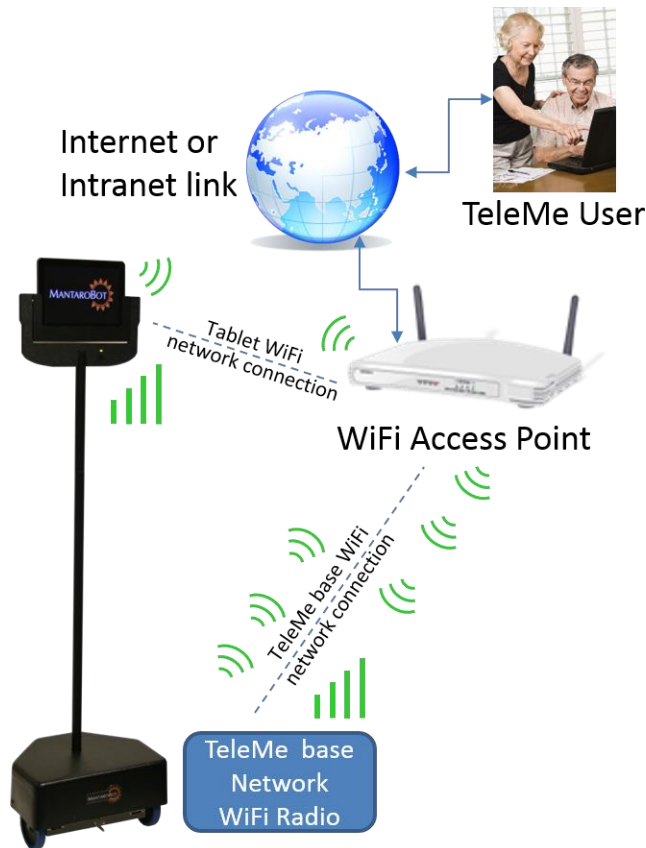
4.1 Configure User Device:

By following the steps in the previous page, the TeleMe base should now be configured for use. Now, it is time to configure the user device that will be plugged in to the TeleMe as its head. Follow one of the two configuration sections below based on if your TeleMe has the Single WiFi Radio or Multi-Wifi Radio.

4.1.1 Single Wifi Radio Solution

The user device (e.g. tablet) used with TeleMes with one single Wifi radio are to be configured as follows:

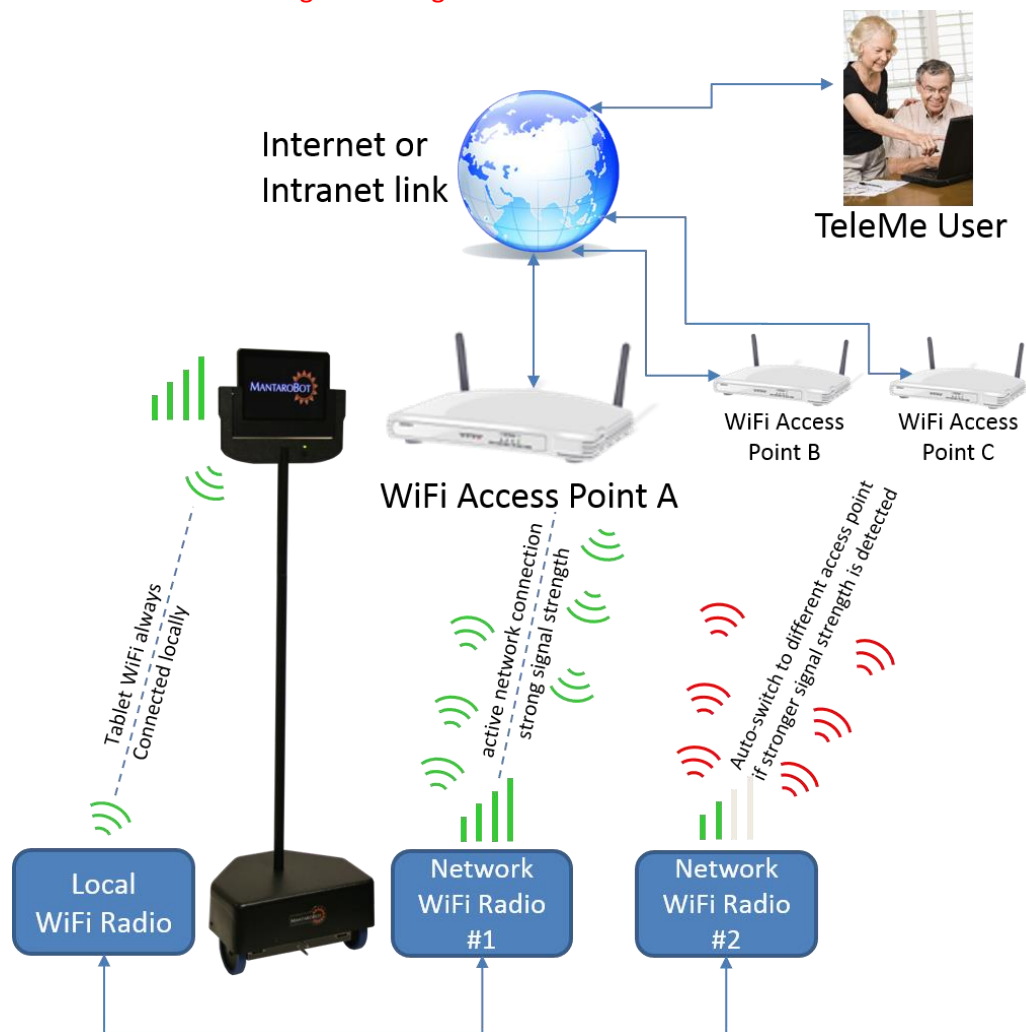
1. Configure the Wifi of the user device to use the customer Wifi network (same configuration as Wifi in the TeleMe base).



MantaroBot™
20410 Century Boulevard • Suite 120 • Germantown Maryland 20874
www.MantaroBot.com • info@mantarobot.com
Phone 301 528 2244 • Fax 301 528 1933

4.1.2 Multi-Wifi Radio Solution

The Multi-Wifi Radio option includes 3 Wifi radios in the TeleMe base. The Local Wifi Radio as shown in the diagram below is dedicated for use with the user device (e.g. tablet) that is used as the head of the TeleMe. Some environments where the TeleMe is used are very large and the network may be setup with multiple Access Points (APs). Some tablets are not very good at keeping an ongoing conference call from dropping when automatically switching from one AP to another. By configuring the tablet to use the local Wifi of the TeleMe, the tablet will never have to switch the Wifi network it is listening to. All data will be routed through the other 2 Network Wifi radios of the TeleMe base which will handle switching from one AP to another seamlessly. **NOTE: The only requirement is that the IP address of the TeleMe should not change when it goes from one AP to another.**



MantaroBot™

20410 Century Boulevard • Suite 120 • Germantown Maryland 20874

www.MantaroBot.com • info@mantarobot.com

Phone 301 528 2244 • Fax 301 528 1933

1. Configure the Wifi of the user device to use the Local Wifi Radio in the TeleMe base (as shown in the picture above). The SSID name and password are configurable in the Advanced Settings page of the TeleMe web front. For information on the SSID name/password of this Local Wifi see Section 6.5. (The user is not required to connect the user device to the Local Wifi and can still configure it to use the customer Wifi network if they choose to.)
2. No further WiFi configuration is required if the steps in Section 4 were followed previously as both Network Wifi Radios in the TeleMe get configured for the same customer Wifi network. One of these radios will be active and the second will always be searching for another AP (access point) that may have a stronger signal strength in the same network. If a stronger signal is detected, the TeleMe will auto-switch.

MantaroBot™

20410 Century Boulevard • Suite 120 • Germantown Maryland 20874

www.MantaroBot.com • info@mantarobot.com

Phone 301 528 2244 • Fax 301 528 1933

5 MantaroBot Software

This section provides an overview of the software needed to use the MantaroBot before providing further details later in this user guide.

5.1 Robot Application Overview

The MantaroBot Robot application runs on the control hardware located in the base of the MantaroBot and is **already pre-installed**. The Robot application is only accessible via a web browser either when the MantaroBot is in Configuration Mode or when the robot is in the same wireless network as another computer or WiFi device with browser support. When new software updates are available they can be installed **only by someone local to the MantaroBot**, not remotely unless connecting over a VPN connection (information for updating is provided later). This application is where the TeleMe configuration and initial user administration must occur for the MantaroBot. A user with administrator privileges will also be able to perform some administrative tasks remotely using the MantaroBot Controller application.

5.2 Controller Application Overview

The TeleMe 2 can be remotely controlled either by the Windows desktop installable, MantaroBot Controller application, or the web browser based MantaroBot TeleGo controller. The requirements of the devices that can be used to control the TeleMe are described later in this guide. The controller is used to connect to your MantaroBot for remote use and allows the user to drive the MantaroBot and hold audio/video (A/V) teleconferences.

NOTE: The desktop installable MantaroBot Controller application for the TeleMe is different than the MantaroBot Controller application for the MantaroBot Classic TelePresence Robot. If you own a Classic, you will still have to separately install the Controller application for the TeleMe. Only one controller application should be running at any given time. The Controller application for the TeleMe can be used for any of the TeleMe line of products.

Once an administrator user account is created on the MantaroBot Robot application, an administrator will be able to remotely login to the MantaroBot using the controller application and perform user and some robot administration tasks. There are certain configuration parameters that can only be done from the Robot application.

6 Robot Application

This section will provide important information regarding using the MantaroBot Robot application via a web browser (mainly for configuration purposes). It will provide details on the TeleMe Main Page webpage and all sub menu links. Accessing the TeleMe's web pages can be done one of three ways.

First Method: This method is the easiest and access is gained using the web-based controller, the [MantaroBot TeleGo Controller](http://www.mantarobot.com/telego) (www.mantarobot.com/telego), to dial into the TeleMe. Follow the numbered steps below if the following bullet list of requirements are met:

- The current Robot Application version on your TeleMe must be 2.7 or greater
 - A non-admin or admin user can log in to check status. A user with administrator privileges must log in to perform any configuration changes or updates.
 - The computer or device used to dial into the TeleMe must be on the same LAN network as the TeleMe (could be connecting via a VPN connection)
 - The TeleMe is already configured and ready to accept calls
 - The network that the TeleMe is configured for has external internet access
1. Using the [MantaroBot TeleGo Controller](http://www.mantarobot.com/telego), call the desired TeleMe.
 2. Click on the 'Options' button, select 'Settings' and then click on the 'Controller' tab.
 3. Click on the 'TeleMe Main Page' link in the Controller Settings tab. (See TeleGo User Guide for more details).

Second Method: This method of access is gained by having physical access to the TeleMe and will be the required method if the TeleMe is not configured for a WiFi network yet. Place the TeleMe into Configuration Mode as described in the "Enter Configuration Mode" steps of Section 4. Access the webpages at the link address provided in Section 4.

Third Method: This method of access is gained by a user with administrator privileges calling the robot using the desktop installable MantaroBot Controller application while being on the same LAN network that the TeleMe is currently configured for. See Section 7.7.3 on how to access the web pages using the Controller Application.

6.1 TeleMe Main Page

The main page of the TeleMe web front will provide status information on the configuration of the robot. As the picture shows below, it will show the current IP address of the TeleMe base and Wifi

MantaroBot™
20410 Century Boulevard • Suite 120 • Germantown Maryland 20874
www.MantaroBot.com • info@mantarobot.com
Phone 301 528 2244 • Fax 301 528 1933

Network it is connected to. This main page also provides information on the configuration status of the various Robot Control Path options for the TeleMe. If the TeleMe is configured for a particular Robot Control path it will be followed by a green check mark, otherwise, it will be followed by a red X. For more information on Robot Control path see Section 7.3. The date and time shown should be correct otherwise it needs to be configured in the Advanced Settings section.



MANTAROBOT

MantaroBot TeleMe Main Page

Network Status

Present IP is 172.XX.X.XXX
Presently connected to **your_company_wifi**

Friday, November, 14 2014 01:06 PM EST

Robot Control Path Status

WebRTC	✓
Direct Socket Connection	✓
MantaroBot Communication Service Admin Channel	✓
MantaroBot Communication Service Main Channel	✓

Main Page [Wifi Connection page](#) [Wifi Profile Editor](#) [User Administration](#) [Advanced Setting](#) [About](#)

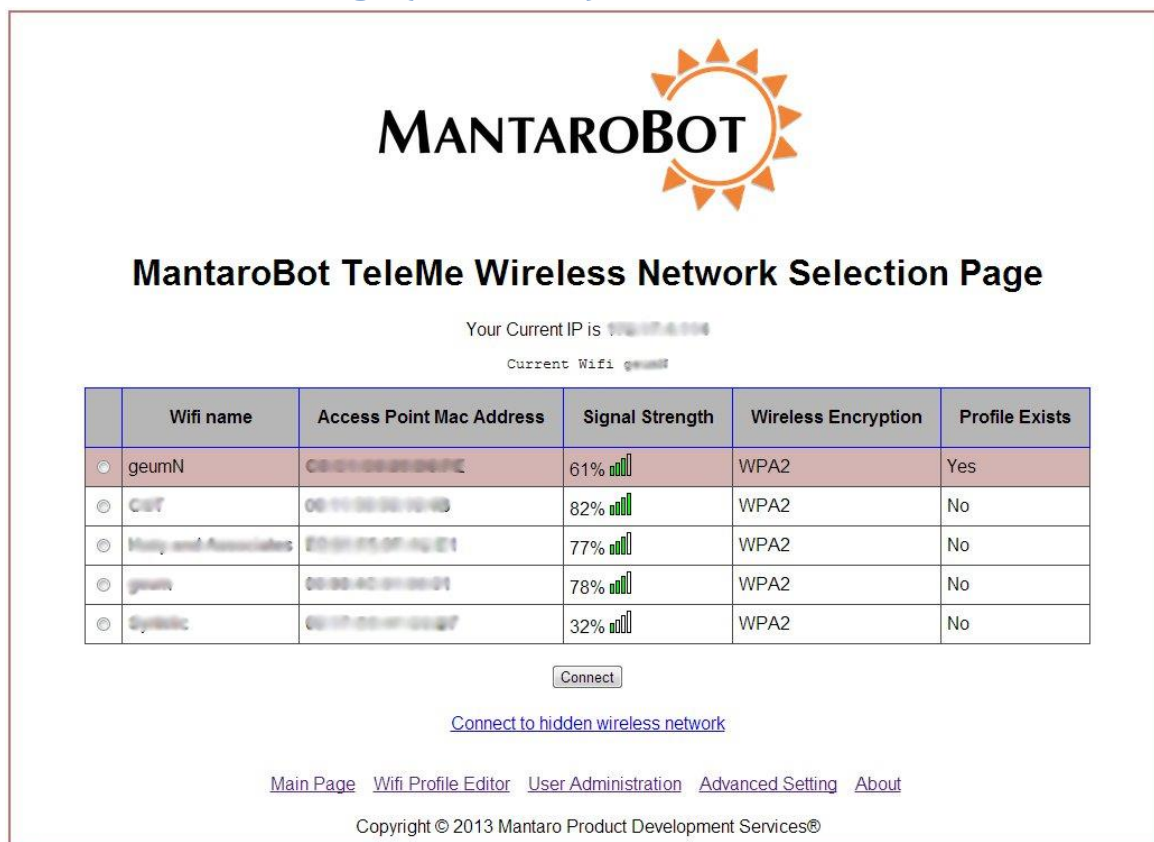
Copyright © 2014 MantaroBot™ Corp.

The “Main Page”, “Wifi Connection Page”, and “About” page are available without the need for a username and password. The Wifi Connection page will display all the available non-hidden networks.






MantaroBot™
20410 Century Boulevard • Suite 120 • Germantown Maryland 20874
www.MantaroBot.com • info@mantarobot.com
Phone 301 528 2244 • Fax 301 528 1933

However, to configure the TeleMe for a network will require administrator level access. There are other links at the bottom of the main web page that will also require administrator level access. They will allow Administrators to perform user administrative tasks and configure advanced settings of the TeleMe.

6.2 Network Selection Page (sub-menu)



The screenshot shows the 'MantaroBot TeleMe Wireless Network Selection Page'. At the top, it displays the MantaroBot logo and the title. Below the title, it shows the current IP address as 192.168.1.104 and the current WiFi network as geumN. A table lists available wireless networks with columns for Wifi name, Access Point Mac Address, Signal Strength, Wireless Encryption, and Profile Exists. The table contains five entries: geumN (61% signal, WPA2, Profile Exists), CBT (82% signal, WPA2, No), Home and Associates (77% signal, WPA2, No), geum (78% signal, WPA2, No), and CBT (32% signal, WPA2, No). Below the table is a 'Connect' button and a link to 'Connect to hidden wireless network'. At the bottom, there are links for 'Main Page', 'Wifi Profile Editor', 'User Administration', 'Advanced Setting', and 'About', followed by a copyright notice for 2013 Mantaro Product Development Services.

	Wifi name	Access Point Mac Address	Signal Strength	Wireless Encryption	Profile Exists
<input checked="" type="radio"/>	geumN	C8:D1:08:2B:04:FC	61% 	WPA2	Yes
<input type="radio"/>	CBT	08:11:3E:3E:1E:4B	82% 	WPA2	No
<input type="radio"/>	Home and Associates	ED:01:05:0F:04:E1	77% 	WPA2	No
<input type="radio"/>	geum	08:00:4C:01:00:01	78% 	WPA2	No
<input type="radio"/>	CBT	08:11:3E:3E:1E:4B	32% 	WPA2	No

Connect

[Connect to hidden wireless network](#)

[Main Page](#) [Wifi Profile Editor](#) [User Administration](#) [Advanced Setting](#) [About](#)

Copyright © 2013 Mantaro Product Development Services®

Click on the 'Wifi Connection Page' link at the bottom of the webpage and the above webpage will appear. This Wifi Connection Page (or Network Selection Page) is used to select a new wireless network for the TeleMe to use. Follow the steps below:

1. When first browsing to this web page, the TeleMe will scan for available networks and will present a window (see above) listing all the available wireless networks in the MantaroBot TeleMe's area. Select the network that the MantaroBot TeleMe should use for normal operation and click the 'Connect' button located below the list of connections. You may be

MantaroBot™
 20410 Century Boulevard • Suite 120 • Germantown Maryland 20874
www.MantaroBot.com • info@mantarobot.com
 Phone 301 528 2244 • Fax 301 528 1933

required to enter an administrator username and password. An initial administrator account was setup prior to the shipment of the TeleMe. This information can be found on the Information sheet that was shipped with the robot. To connect to a network that is not shown (e.g. network whose SSID is not broadcasted) click on "Connect to hidden wireless network" and enter the requested information. Most networks require a network security key or passphrase. To connect ask your network administrator or Internet service provider (ISP) for the security key or passphrase.

2. If connecting to the selected network was successful, a series of audible beep-tones will be heard and the LED will be on solid.

If configuration to a network was unsuccessful, the LED will blink fast many times followed by a pause (similar to having no Wifi connection). If the robot was in Configuration Mode to start with, it will return to that mode. If the robot was already configured for a network before trying to switch to a new network, it will attempt to reconnect to the old network. If that also fails, the robot will have to be placed into Configuration Mode and the steps in this section will need to be repeated.

3. At this point, the web browser link may timeout because the TeleMe should be configured for the new network. The web browser on the device used to configure the TeleMe can be closed. The TeleMe should now be ready for operation. If the configuration web pages were being accessed during a call to the TeleMe, the call will disconnect as well because the TeleMe was reconfigured for a new network. The user will have to call the TeleMe again to use it.
4. **If the network selection was done while the TeleMe was in Configuration mode, please turn the TeleMe power off and then back on using the push button on the device holder.**

MantaroBot™

20410 Century Boulevard • Suite 120 • Germantown Maryland 20874

www.MantaroBot.com • info@mantarobot.com

Phone 301 528 2244 • Fax 301 528 1933

6.3 Wifi Profile Editor (sub-menu)

To manage the profiles of previously connected networks on the MantaroBot TeleMe, click the link labeled “Wifi Profile Editor” at the bottom of any of the web pages. A user with administrator privileges will be requested to login to make any changes. An initial administrator account was setup prior to the shipment of the TeleMe. This information can be found on the Information sheet that was shipped with the robot. More user accounts (including administrator accounts) can be setup as described further below.

Once an administrator has logged in, a list of all currently setup Wifi profiles will be displayed. To delete any profiles, select it and click the delete button. More profiles are created and added to the list once the network has been selected for use on the Main page.



[Log Out](#)

MANTAROBOT

Wireless Profile Editor for MantaroBot TeleMe

Select	Wifi Profile Name	Wifi Mac Address	Encryption Type
<input type="radio"/>	MantaroBot	08:00:27:00:00:00	WPA2

[Main Page](#) [Wifi Connection Page](#) [User Administration](#) [Advanced Setting](#) [About](#)

Copyright © 2012 Mantaro Product Development Services®

6.4 User Administration (sub-menu)

An administrator can manage user accounts by clicking on the “User Administration” link on the bottom of any web page and logging in with their administrator username and password. Once logged in, a web page with two boxes labeled “Username” and “Password” will be displayed. To create a new user account, enter the desired login information in these two fields. If the user should also have administrator privileges, check the “Is Admin” box. Once the desired information is entered, click the “Add User” button below the displayed list of users.



To delete a user account, highlight the username in the list of users, and then click “Delete User.” Any administrator accounts can also be deleted except for the one that is currently logged in. There must always be at least one Administrator account registered to your device, otherwise it will not function properly.

To make changes to an account, such as password or administrative rights, highlight the username to edit and click “Edit User”. On the page shown make the changes as desired and then click on “Apply Changes”.

MantaroBot™

20410 Century Boulevard • Suite 120 • Germantown Maryland 20874

www.MantaroBot.com • info@mantarobot.com

Phone 301 528 2244 • Fax 301 528 1933

6.5 Advanced Settings (sub-menu)

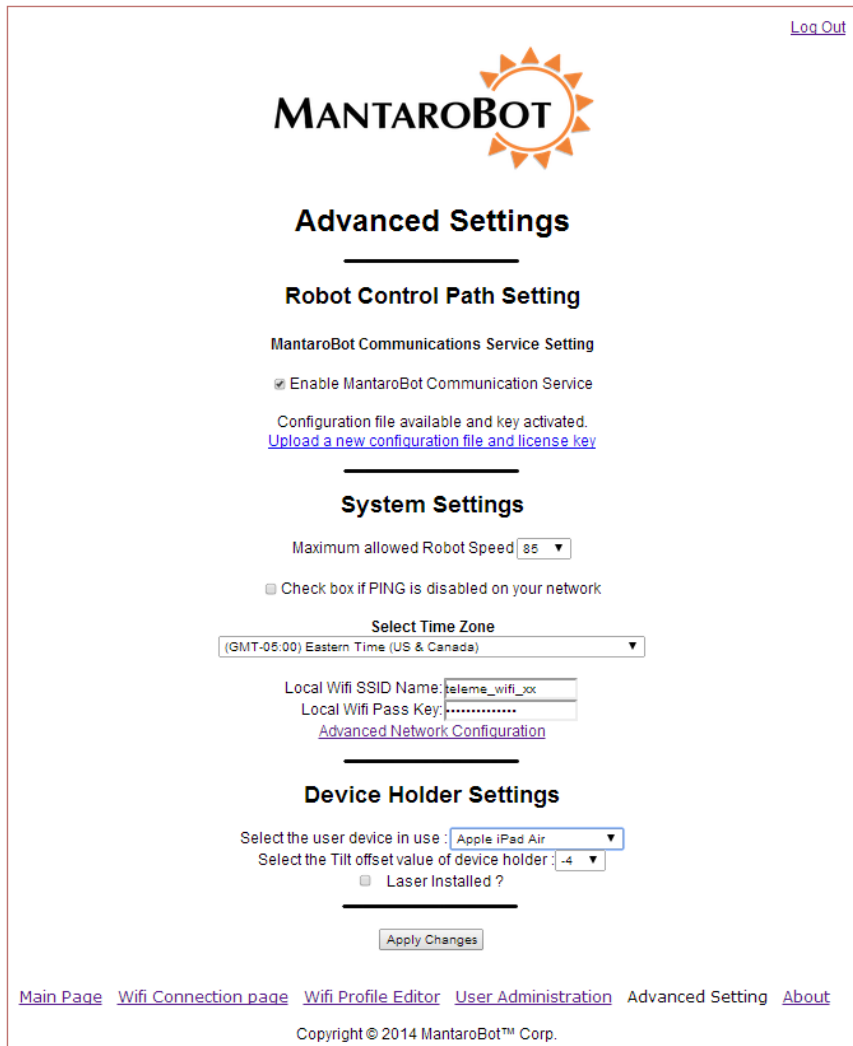
There are various other settings for the MantaroBot TeleMe that need configuration or can be modified by an administrator. These values are set in the factory but may need to be updated. To access these settings click on the “Advanced Setting” link at the bottom of any web page and the web page on the right will be shown. Here the administrator can edit the Robot Control Path settings, the System Settings, Advanced Network Configuration, and Device Holder settings.

MantaroBot Communications

Service Setting – If a monthly

plan to use the optional MantaroBot Communications Service for the Robot Control Path (more info provided later in this User Guide) has been purchased, click ‘Enable MantaroBot Communication Service’ link. A new link will be presented ‘Upload a new configuration file

and license key’. Click on that link to upload the configuration file and enter license key that was provided. The window shown below will appear for entering the information.



[Log Out](#)

MANTAROBOT

Advanced Settings

Robot Control Path Setting

MantaroBot Communications Service Setting

☒ Enable MantaroBot Communication Service

Configuration file available and key activated.
[Upload a new configuration file and license key](#)

System Settings

Maximum allowed Robot Speed

☐ Check box if PING is disabled on your network

Select Time Zone

Local Wifi SSID Name:
 Local Wifi Pass Key:
[Advanced Network Configuration](#)

Device Holder Settings

Select the user device in use:

Select the Tilt offset value of device holder:

☐ Laser Installed ?

[Main Page](#) [Wifi Connection page](#) [Wifi Profile Editor](#) [User Administration](#) [Advanced Setting](#) [About](#)

Copyright © 2014 MantaroBot™ Corp.

MantaroBot™

20410 Century Boulevard • Suite 120 • Germantown Maryland 20874

www.MantaroBot.com • info@mantarobot.com

Phone 301 528 2244 • Fax 301 528 1933



Maximum Speed Allowed – The maximum allowed speed for the robot to travel is displayed as a percentage. 100% is equivalent to approximately 2 feet per second. Select between 40 – 100.

PING disable – Some networks have ping disabled. If so, check the box to disable ping otherwise the TeleMe’s WiFi radios will be reinitialized every 80 seconds.

Select Time Zone – From the drop-down menu, select the time zone that the robot will reside in. Incorrect information may cause confusion between local and remote users.

Local Wifi SSID Name/Pass Key – If your TeleMe has the standard single Wifi radio, these fields will not be present. If your TeleMe has the Multi-Wifi Radio solution, you can configure the SSID name and password in these fields. By default, the SSID name and password are “teleme_wifi_<##>” where <##> are the digits at the end of the TeleMe device’s serial number. For information on single and Multi-Wifi Radio solution please see Section 4.1.1 and 4.1.2.

Advanced Network Configuration – For enabling DHCP (default is enabled), configuring Static IP for the TeleMe, modifying the IP address of the Local WiFi or disabling Multi-WiFi radio option (for Multi-WiFi Radio configurations only), disabling 2.4 GHz WiFi Band (for TeleMe with 2.4 GHz and 5GHz WiFi capable radios), and configuring network time from MantaroBot Name Server or a configurable NTP server, click the ‘Advanced Network Configuration’ link.

MantaroBot™

20410 Century Boulevard • Suite 120 • Germantown Maryland 20874

www.MantaroBot.com • info@mantarobot.com

Phone 301 528 2244 • Fax 301 528 1933

Device Holder Setting – ALL the values in this section will be set by the factory. If a different device holder is installed other than what is initially shipped with the TeleMe, the user will have to update these settings.

From the drop-down menu, select the type of user device that will be used as the “head” of the TeleMe. If an optional laser pointer is installed inside the device holder, also click the check box “Does it have a laser?”. There is also a Tilt offset correction value for the device holder that must be configured. When the TeleMe first powers up, the tilt of the device holder should be centered. If it is not, adjust the Tilt Offset value until it is centered. To test a new tilt offset value, the “Apply Changes” button must be hit.

To save changes on this page, click the “Apply Changes” button otherwise all changes will be lost.

6.6 About (sub-menu)

The “About” link on the bottom of any web page will take the user to the web page on the right showing the version numbers for the various components of the MantaroBot – Serial Number, Robot Application, Firmware and Hardware version, and Hardware Serial number.

The webpage also provides links to the MantaroBot support website, ability to check for software updates, and perform Manual Software updates (for TeleMes that are used inside a closed network). The support



Robot Info

MantaroBot Serial Number: mantarobottleme05
 Robot Application Version: 4.0
 Firmware Version: 0F
 Hardware Revision: 0J
 MantaroBot Hardware Serial Number: 91

Accessories

Motorized Pan 360° - Present
 Laser Pointer - Present
 Multiple Wifi Radio - Absent
 LED Headlights - Present

[MantaroBot support site](#)
[Check for updates](#)
[Manual Software Update](#)

[Main Page](#)
[Wifi Connection page](#)
[Wifi Profile Editor](#)
[User Administration](#)
[Advanced Setting](#)
[About](#)

Copyright © 2015 MantaroBot™ Corp.



site link and check for updates link will only work if the TeleMe is configured for a wireless network (with external internet access) and is not in Configuration Mode. If the TeleMe is in configuration mode, there will also be a 'factory reset' option that will remove all user accounts and set them back to the default factory accounts. It will also clear all the WiFi profiles.

6.7 Upgrading the Software

Refer to the “**MantaroBot TeleMe Robot Application Update Instructions**” document available at www.mantarobot.com/support.htm under the TeleMe 2 tab or on the CD that was shipped with your TeleMe.

MantaroBot™

20410 Century Boulevard • Suite 120 • Germantown Maryland 20874

www.MantaroBot.com • info@mantarobot.com

Phone 301 528 2244 • Fax 301 528 1933

7 Controller Application

7.1 Remote PC / Mac Requirements / Web-browser

To use the desktop installable MantaroBot Controller application, the computer/device must meet the following requirements:

Windows PC desktop controller (Mac users should use Web-browser controller):

1. A 32-bit or 64-bit version of Windows XP, Windows 7, or Windows 8 Operating system
2. The latest version of your desired video conferencing application. If you are using Skype on Windows 8 you should use Skype for Desktop (not Skype Metro).
3. A desktop mouse or joystick (Windows only). (The MantaroBot can be controlled from a touch pad but it is not recommended.)
4. Headphones and microphone (will improve audio experience)
5. A webcam (if two-way video is desired)

Web-browser controller:

1. A device with a compatible web-browser can use the web-based browser controller, MantaroBot TeleGo Controller, with a direct socket connection, the MantaroBot Communications Service, or WebRTC by visiting www.mantarobot.com/telego. WebRTC with TeleGo requires the use of a browser (e.g. Chrome or Firefox) that supports the WebRTC protocol.

This user-guide explains all of the functions available in the desktop controller version. Refer to the TeleGo User Guide available on the support page at www.mantarobot.com for more information on the TeleGo controller.

Note: It is suggested that a webcam be used at all times such that people interacting with the MantaroBot can see who is controlling it. This practice improves the interpersonal dynamics and changes the way the MantaroBot is perceived by those local to it: from a surveillance drone to that of a person.

7.2 Installation & Upgrades

The MantaroBot Controller application (desktop controller version) can control the TeleMe using a Direct Socket connection, the MantaroBot Communications Service, or WebRTC. The TeleGo web-based browser controller does not require any updating from the user side. The following steps describe the installation and/or upgrade process of the MantaroBot Controller application:

1. Install and run the latest version of your choice of audio/video conferencing application if it is not already installed on your PC. If you plan on using Skype (Skype for Desktop, not Metro, for Windows 8 systems) or another A/V conferencing application from a separate device other than the one used to control the TeleMe, please update the application on the appropriate device.
2. Installing the Controller:
<For PC Windows users>: Find the MantaroBot_TeleMe_Controller_Setup_verXXX.exe installer file and copy / download to your computer. This file is available on the CD that came with the MantaroBot. This file and any newer versions are also available for download via the support link on the MantaroBot website at www.MantaroBot.com. Double click on the .exe file to run the installer.

<For Mac users>: Please use the web-based browser controller, TeleGo, at www.mantarobot.com/telego. No installation is required.
3. <For PC Windows user>: If this is an upgrade to an existing installation, it is necessary to point the update to the existing installation path so the files can be replaced.

7.3 MantaroBot Contact List Configuration

The MantaroBot TeleMe 2 has the flexibility to be configured to use one of several available robot control paths to provide the network connection between the desktop or web-browser controller and the TeleMe. This flexibility allows the use of any audio/video conferencing application. The configured robot control path is the network connection which the controller uses to communicate with the TeleMe to control its various robot functions (e.g. drive, pan/tilt, etc.). The robot control path is an independent communication path from that of the audio/video conference itself. In fact, the audio/video conference itself can be established from a separate device than the one running the controller application (e.g. a remote user using an iPad running FaceTime for the audio/video and simultaneously using a PC or mobile device running the desktop controller or web-browser TeleGo controller application.)

MantaroBot™

20410 Century Boulevard • Suite 120 • Germantown Maryland 20874

www.MantaroBot.com • info@mantarobot.com

Phone 301 528 2244 • Fax 301 528 1933

When adding a robot to the contact list, the user has to select which robot control path will be used for that particular TeleMe robot. Different TeleMes in the contact list will be configurable for different control paths. Below are the three available robot control paths and some differences between them.

1. WebRTC
 - a. Use any application available for the user device for audio/video conferencing
 - b. Can run audio/video conferencing application from a separate device than the device running the controller application
 - c. Uses port 9001 to setup the initial robot control path, but then a direct peer-to-peer connection will be used to communicate robot control commands (free, no additional user cost incurred)
 - d. If using TeleGo controller application, a WebRTC compatible browser must be used (e.g. Chrome or Firefox) on devices that support WebRTC.
2. MantaroBot Communications Service
 - a. Use any application available for the user device for audio/video conferencing
 - b. Can run audio/video conferencing application from a separate device than the device running the controller application
 - c. Use MantaroBot Communications Service (cloud based service) for communicating robot control commands (monthly service plan required – please contact MantaroBot for more information)
 - d. Uses port 80 for data transfer alleviating the need of port forwarding for NAT traversal
3. Direct Socket connection
 - a. Use any application available for the user device for audio/video conferencing
 - b. Can run audio/video conferencing application from a separate device than the device running the controller application
 - c. Uses direct socket connection (port 9000) between MantaroBot and the TeleMe Controller for communicating robot control commands (free, no additional user cost incurred)
 - d. Primary use for within private/corporate networks (including remote user via VPNs) where traffic does not or can not leave the IT infrastructure

MantaroBot™

20410 Century Boulevard • Suite 120 • Germantown Maryland 20874

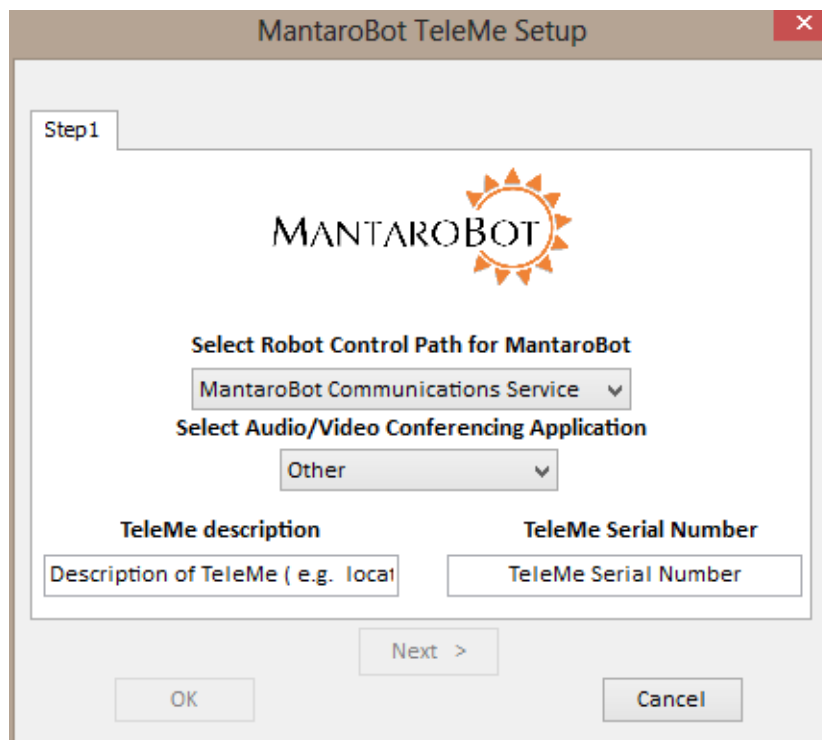
www.MantaroBot.com • info@mantarobot.com

Phone 301 528 2244 • Fax 301 528 1933

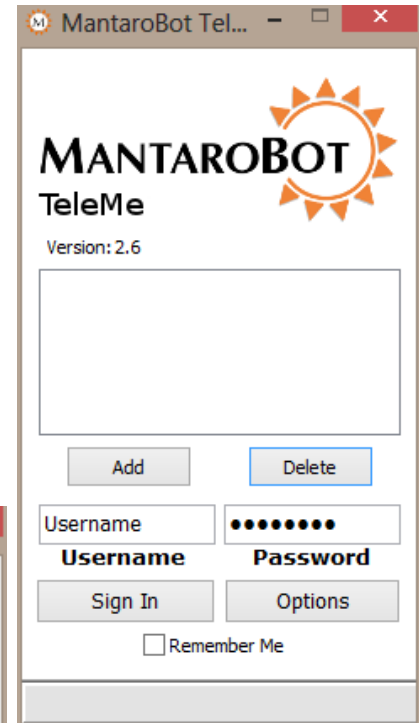
7.3.1 Creating MantaroBot Contact List

To connect to a MantaroBot, you must first add a robot to the contact list by selecting a control path to use and configure the robot accordingly. (Picture on the right shows a box with an empty contact list.)

1. Launch the MantaroBot Controller program.
2. Click on the 'Add' button to add your first MantaroBot to the Controller list. You can add or delete any MantaroBot contact as necessary.
3. When the 'Add' button is clicked, the window shown below will appear.

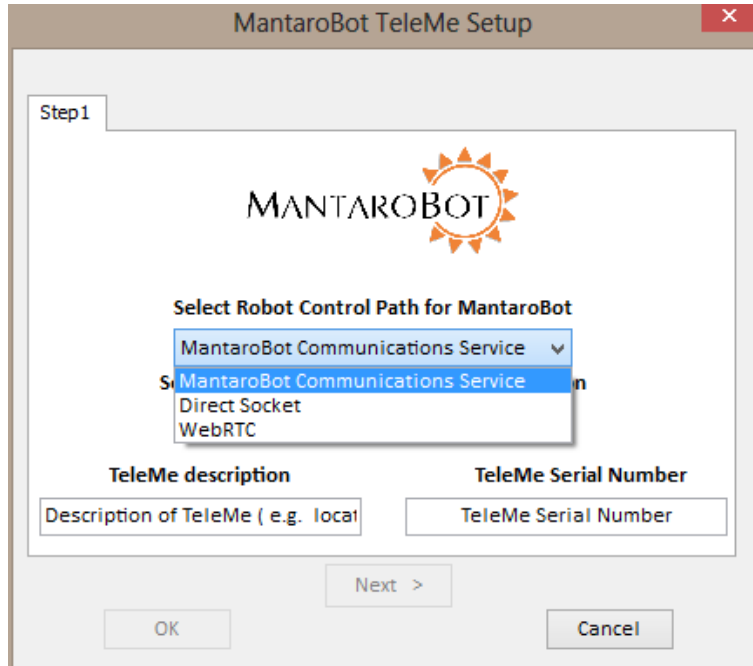


The 'MantaroBot TeleMe Setup' window is shown in 'Step1'. It features the MantaroBot logo at the top. Below the logo, there are two dropdown menus: 'Select Robot Control Path for MantaroBot' (set to 'MantaroBot Communications Service') and 'Select Audio/Video Conferencing Application' (set to 'Other'). At the bottom, there are two text input fields: 'TeleMe description' (with placeholder text 'Description of TeleMe (e.g. local)') and 'TeleMe Serial Number' (with placeholder text 'TeleMe Serial Number'). Navigation buttons include 'Next >', 'OK', and 'Cancel'.



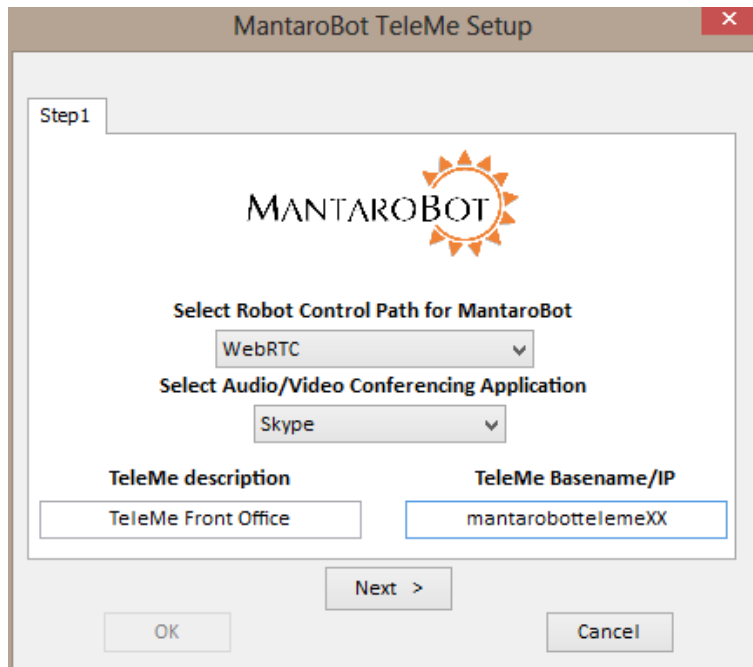
The 'MantaroBot TeleMe' window displays the version '2.6'. It contains a large empty rectangular box for a contact list. Below this box are 'Add' and 'Delete' buttons. Further down are input fields for 'Username' and 'Password' (masked with dots), followed by 'Sign In' and 'Options' buttons. A 'Remember Me' checkbox is located at the bottom.

- MantaroBot Controller by default is set to use MantaroBot Communications Service for Robot Control Path and Skype for Audio/Video Conferencing Application. However by clicking Robot Control Path drop down menu (as shown in the following picture), 'Direct Socket' or 'WebRTC' can be selected. You can select 'Skype' or 'Other' as your Audio/Video Conferencing Application from the other pull-down menu. Make the desired selection before proceeding.



7.3.1.1 Configure MantaroBot TeleMe Using WebRTC

- Verify that 'WebRTC' is selected for Robot Control Path.
- 'Skype' or 'Other' can be selected for the Audio/Video Application. If you will be using a separate device to run Skype for the audio/video conferencing application then still choose 'Other' instead of 'Skype'. The 'Skype' selection for the Audio/Video Conferencing is for when the user will be running both the controller application and Skype on the same computer.
- In the TeleMe Description, type the name that you want to see



MantaroBot™

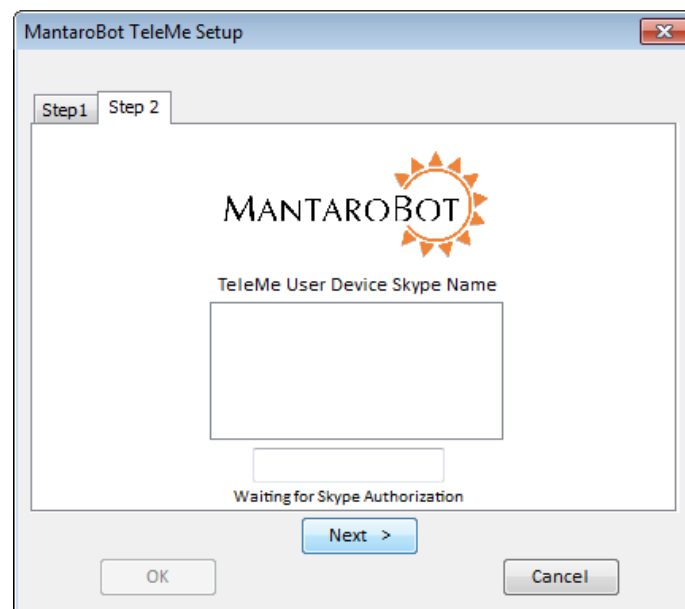
20410 Century Boulevard • Suite 120 • Germantown Maryland 20874

www.MantaroBot.com • info@mantarobot.com

Phone 301 528 2244 • Fax 301 528 1933

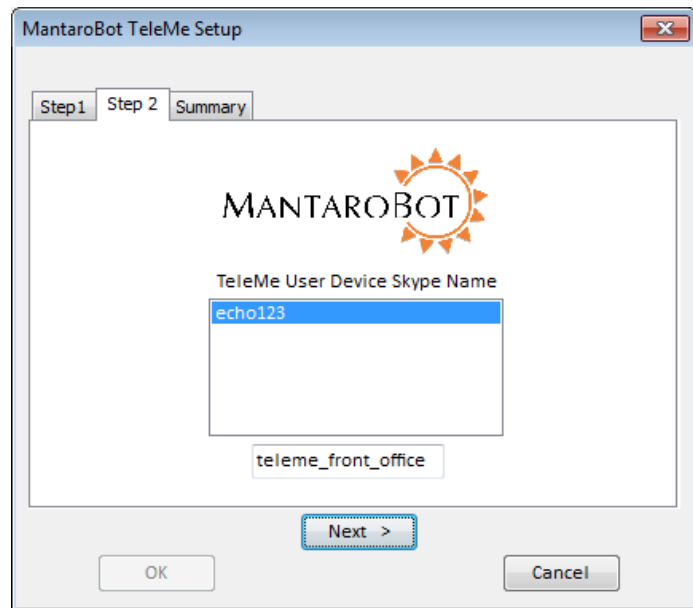
appear in the Controller contact list. This can be any descriptive text you choose (suggestion: the place where the MantaroBot is physically located).

4. In the MantaroBot TeleMe Serial Number field, type the exact TeleMe Serial Number of the MantaroBot to be controlled. This name must match the TeleMe Serial Number shown on the Information Sheet provided with your MantaroBot (e.g. mantarobottelemeXX). It can also be found on the sticker on the underside of the TeleMe. Press 'Next' when complete.
5. If you selected 'Other' for audio/video conferencing, skip to step 9.
6. If you selected 'Skype' as your choice of audio/video conferencing application AND are not logged into Skype, a notification window will appear prompting you to do so.
7. In the next window, you may see the message "Waiting for Skype Authorization" similar to the picture below. If you do follow the directions described in Section 7.4.1 - step #4.

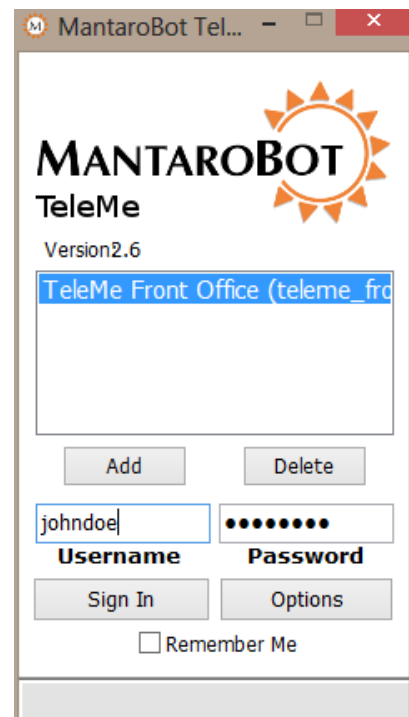
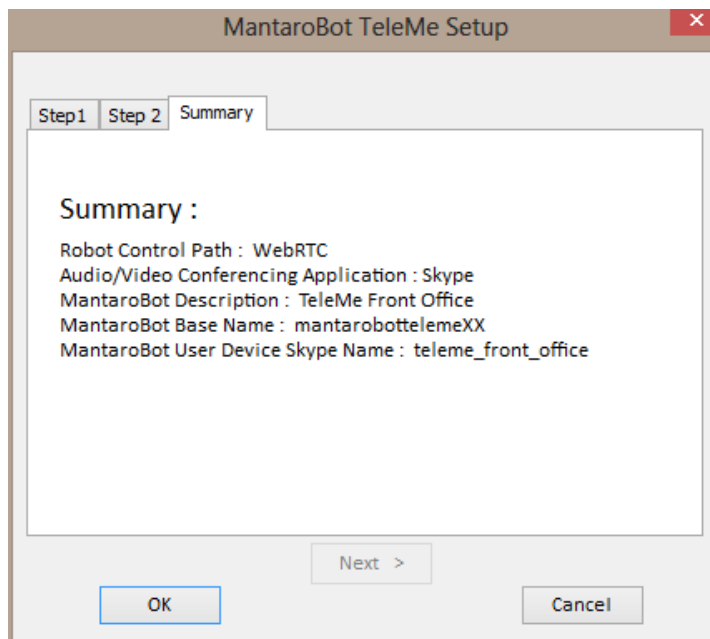


MantaroBot™
20410 Century Boulevard • Suite 120 • Germantown Maryland 20874
www.MantaroBot.com • info@mantarobot.com
Phone 301 528 2244 • Fax 301 528 1933

8. Once Skype Authorization is complete, the TeleMe User Device Skype Name list will appear. Select the Skype name of the user device that will be docked into the selected TeleMe device holder. This user device contact list is populated from the Skype account that the user is currently logged into. If the user device is not on the Skype contact list yet, manually type it into the blank field below the TeleMe User Device Skype Name contact list window. Alternatively, close this window, add it to the Skype contact list, and perform this 'Add' function again. Press 'Next' when complete.



9. The summary page with the selected settings will be shown similar to the picture below. The new robot will be added to your list once you press 'OK' Button.



MantaroBot™

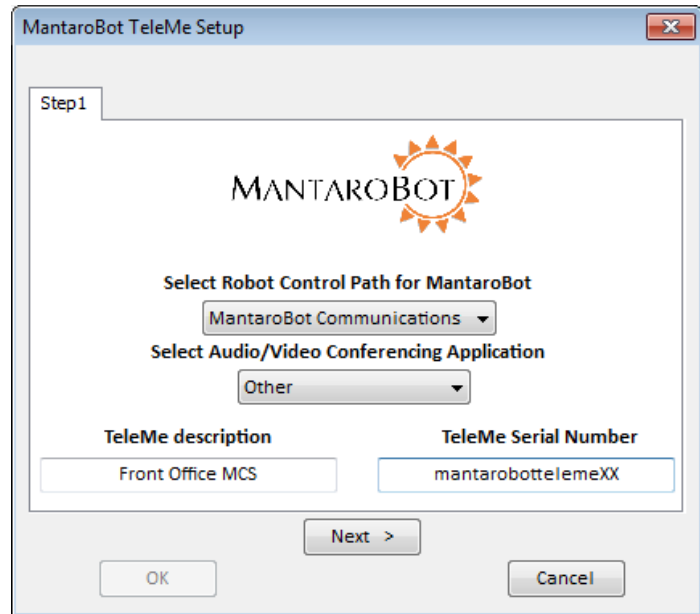
20410 Century Boulevard • Suite 120 • Germantown Maryland 20874

www.MantaroBot.com • info@mantarobot.com

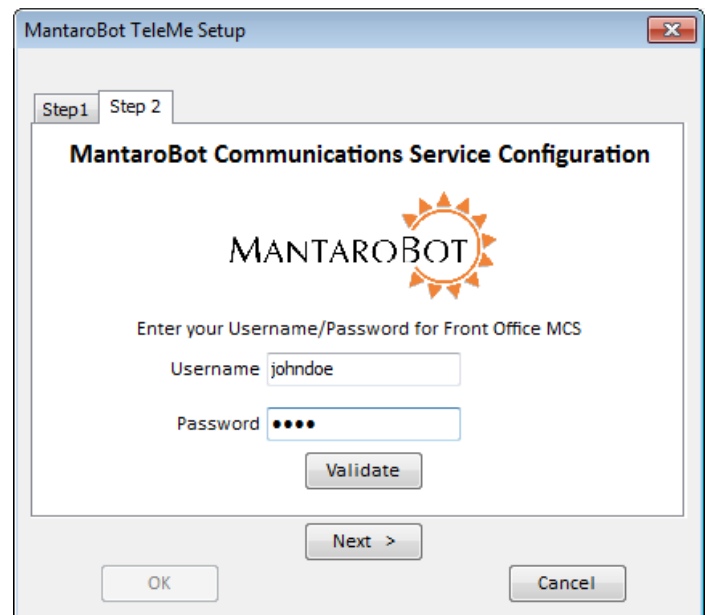
Phone 301 528 2244 • Fax 301 528 1933

7.3.1.2 Configure MantaroBot TeleMe for MantaroBot Communications Service

1. Verify that 'MantaroBot Communications Service' is selected for Robot Control Path.
2. 'Skype' or 'Other' can be selected for the Audio/Video Application. If you will be using a separate device to run Skype for the audio/video conferencing application then still choose 'Other' instead of 'Skype'. The 'Skype' selection for the Audio/Video Conferencing is for when the user will be running both the controller application and Skype on the same computer. If you will be selecting 'Skype', please follow the Skype related instructions from the previous Section 7.3.1.1.



3. In the TeleMe Description, type the name that you want to see appear in the Controller contact list. This can be any descriptive text you choose. (suggestion: the place where the MantaroBot is physically located)
4. In the MantaroBot TeleMe Serial Number field, type the exact TeleMe Serial Number of the MantaroBot to be controlled. This name must match the TeleMe Serial Number shown on the Information Sheet provided with your MantaroBot (e.g. mantarobottelemeXX). It can also be found on the sticker on the underside of the TeleMe.
5. Press next. A new window to configure your controller for the MantaroBot Communications Service (MCS) will appear. Please enter the username/password you would use to connect to this TeleMe and click the Validate button.



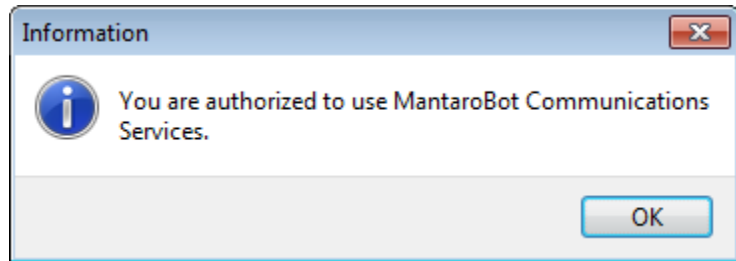
MantaroBot™

20410 Century Boulevard • Suite 120 • Germantown Maryland 20874

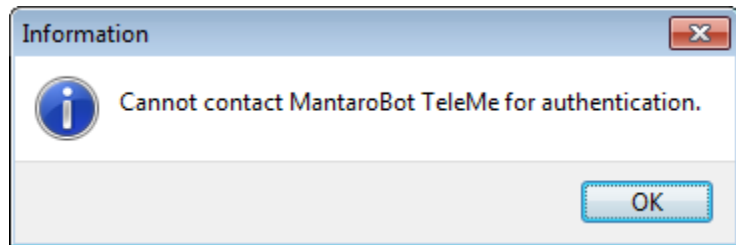
www.MantaroBot.com • info@mantarobot.com

Phone 301 528 2244 • Fax 301 528 1933

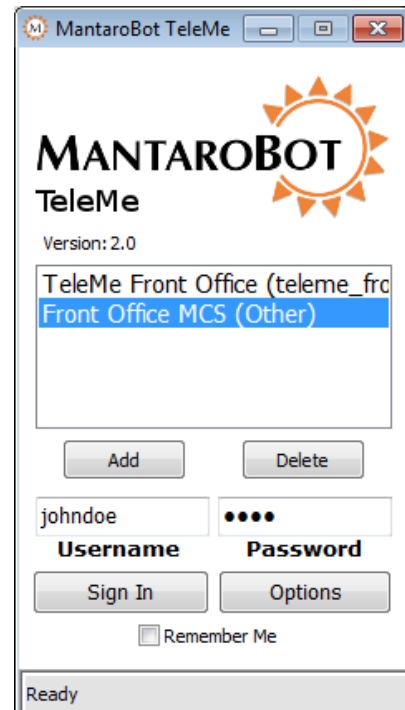
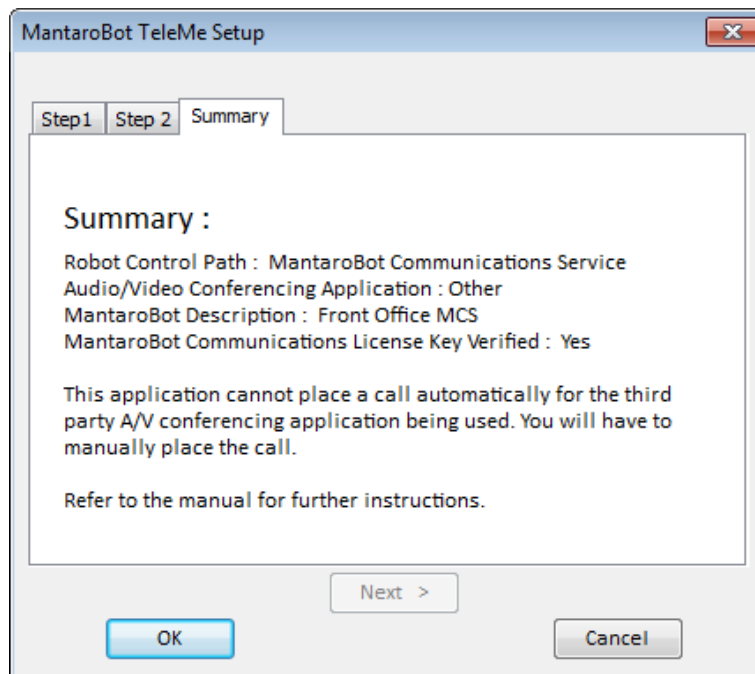
6. If you have a valid user account on this particular TeleMe the popup window on the right will appear. Click 'OK'. If the username/password is incorrect an error window will popup. If the username/password is correct but the TeleMe has not been enabled for MCS, a window will popup asking you to contact your IT administrator.



7. If the TeleMe could not be found (could be offline) or if the TeleMe Serial Number is invalid the following popup window will appear. Please ensure the TeleMe is online and that the serial number is correct and try again.



8. If the validation process was successful, press 'Next' to see the summary page with the current settings as shown below. The new robot will be added to your list once you press 'OK' Button.



MantaroBot™

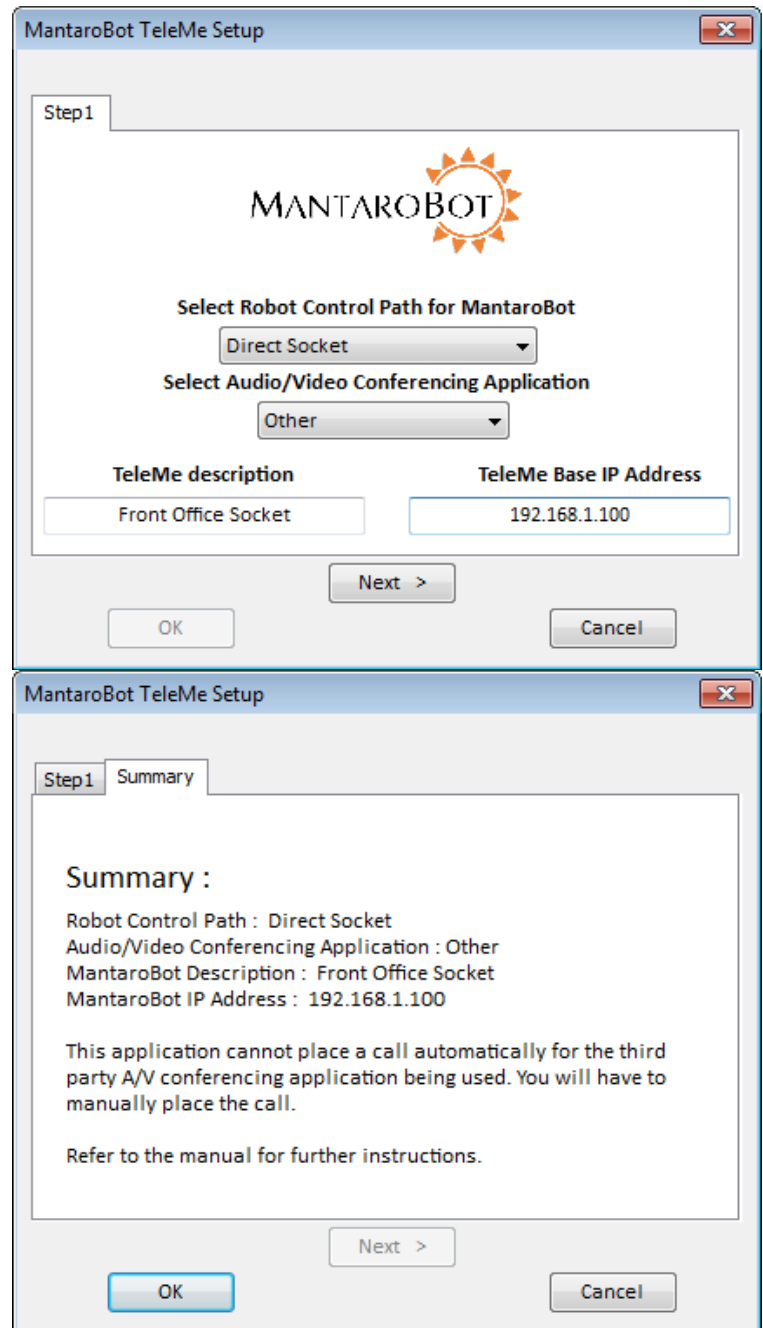
20410 Century Boulevard • Suite 120 • Germantown Maryland 20874

www.MantaroBot.com • info@mantarobot.com

Phone 301 528 2244 • Fax 301 528 1933

7.3.1.3 Configure MantaroBot TeleMe for Direct Socket Connection

1. Verify that 'Direct Socket' is selected for Robot Control Path.
2. 'Skype' or 'Other' can be selected for the Audio/Video (AV) Application. If you will be using a separate device to run Skype for the AV conferencing application then still choose 'Other' instead of 'Skype'. The 'Skype' selection for the AV Conferencing is for when the user will be running the controller app and Skype on the same computer. If you will be selecting 'Skype', please follow the Skype related instructions from the previous Section 7.3.1.1.
3. In the TeleMe Description, type the name that you want to see appear in the Controller contact list. This can be any descriptive text you choose. (suggestion: the place where the MantaroBot is physically located)
4. In the TeleMe Basename/IP field, enter the MantaroBot TeleMe's serial number (e.g. mantarobottelemeXX) as the address of the TeleMe. If your network does not have external Internet access to automatically look up the IP, you will need to enter the IP address of the TeleMe instead.
5. Press 'Next' to see the summary page with the current settings as shown on the right. The new robot will be added to your list once you press 'OK' Button.



MantaroBot TeleMe Setup

Step1

MANTAROBOT

Select Robot Control Path for MantaroBot
Direct Socket

Select Audio/Video Conferencing Application
Other

TeleMe description
Front Office Socket

TeleMe Base IP Address
192.168.1.100

Next >

OK Cancel

MantaroBot TeleMe Setup

Step1 Summary

Summary :

Robot Control Path : Direct Socket
Audio/Video Conferencing Application : Other
MantaroBot Description : Front Office Socket
MantaroBot IP Address : 192.168.1.100

This application cannot place a call automatically for the third party A/V conferencing application being used. You will have to manually place the call.

Refer to the manual for further instructions.

Next >

OK Cancel

MantaroBot™

20410 Century Boulevard • Suite 120 • Germantown Maryland 20874

www.MantaroBot.com • info@mantarobot.com

Phone 301 528 2244 • Fax 301 528 1933

7.3.2 Editing MantaroBot Contact List

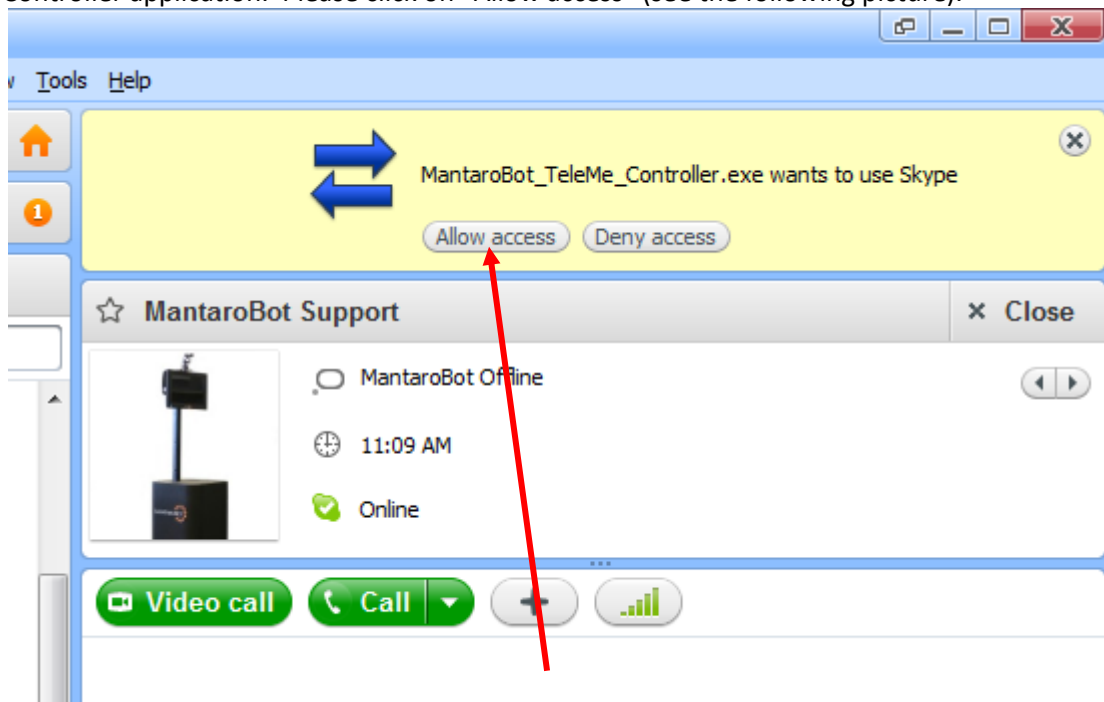
Entries in the contact list can be edited by double-clicking on the contact itself and then clicking on the 'Step 1' tab that appears in the window that is displayed. The user can easily change any of the contact's information except for the Robot Control Path. If you need to change the Robot Control Path then please delete the contact and create a new one.

7.4 Connecting to a MantaroBot (using Skype as Audio/Video Conferencing Application)

Please note: Skype for Desktop should be used instead of Skype Metro on PCs.

7.4.1 The First Time or after Software Updates

1. In the MantaroBot Controller window, select the MantaroBot you want to connect to.
2. Enter your username and password and click the "Sign In" button.
3. <For PC Windows users> If it is the first time that this application has been launched on your computer (or a software update to the Controller application or Skype has just been installed), observe that the Skype window requests permission to allow access to the MantaroBot Controller application. Please click on "Allow access" (see the following picture).



MantaroBot™

20410 Century Boulevard • Suite 120 • Germantown Maryland 20874

www.MantaroBot.com • info@mantarobot.com

Phone 301 528 2244 • Fax 301 528 1933

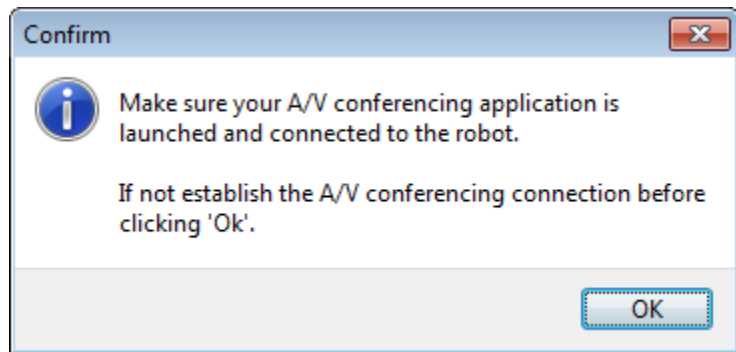
4. Once the access has been provided to MantaroBot Controller and the user authenticated, the MantaroBot will wait for someone local to the MantaroBot to answer the call unless auto-answer is available and configured on the Skype application running on the TeleMe user device. The person local to the MantaroBot needs to select 'video' call on the user device so the remote person can view video. **The remote person should also turn on their video stream in Skype once the call is connected so there is a two-way video and audio call.**
5. Once the call is connected, you will see the control pad as shown on the following page.
6. Before clicking the 'Sign In' button in Step #3 above, the 'Controller Settings' can be modified by clicking on the 'Options' button on the Login window. The 'Controller Settings' can also be modified after signing on to a MantaroBot. See Section 7.7.3 Controller Settings for more details.

7.4.2 Normal Operation

1. In the MantaroBot Controller window, select the MantaroBot you want to connect to.
2. Enter your username and password and click the "Sign In" button.
3. Someone local to the MantaroBot must answer the call unless auto-answer is available and configured on the Skype application running on the TeleMe user device. The person local to the MantaroBot unit needs to select 'video' call so the remote person can view video. **The remote person should also turn on their video stream in Skype once the call is connected so there is a two-way video and audio call.**
4. Once the call is connected, you will see the control pad as shown in the next section.

7.5 Connecting to a MantaroBot (using Other as the Audio/Video Conferencing Application)

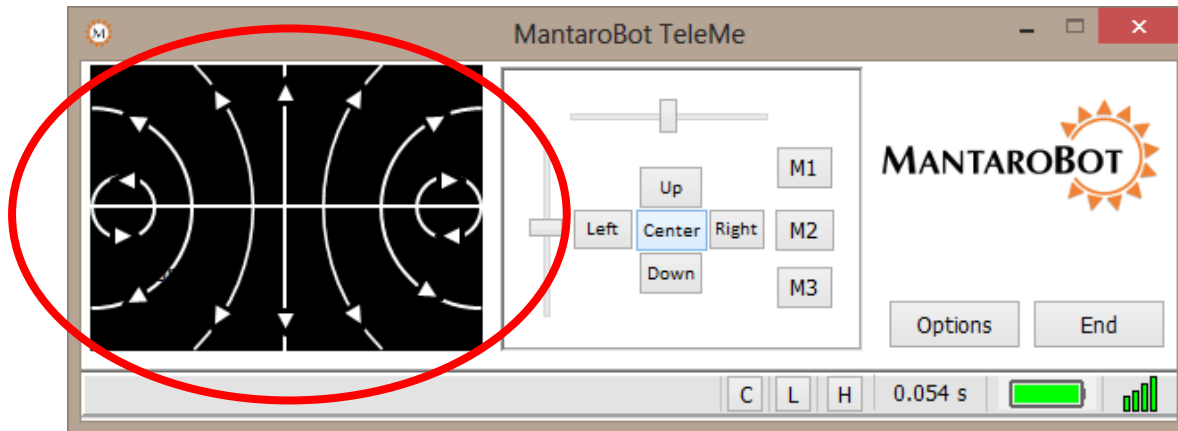
1. Initiate your choice of audio/video conference application call between the remote device and the user device plugged into the TeleMe as its 'head'.
2. Run the MantaroBot Controller application if it is not already running. Select the MantaroBot from the contact list that you want to connect to (should be the same as the one being used for the audio/video conference call from Step #1 above).
3. Enter your username and password and click the "Sign In" button. A notification message will appear reminding you to initiate an audio/video conference call. If you have already done so then simply ignore the message and click 'OK'.
4. Once the robot control path is connected, you will see the control pad as shown in the next section. Please note: clicking on the 'End' button in the control pad shown in the next section will only terminate the robot control path connection. The audio/video conference call must be terminated separately.



7.6 Controlling a MantaroBot

The MantaroBot Controller is split into four sections. The left side is the Drive Motor Control Pad, the middle is for “head” unit Tilt / Pan Control, the right side is for various Options and ending the call, and the bottom is for providing status and control for additional accessories.

7.6.1 Drive Motor Control Pad



7.6.1.1 Driving MantaroBot

To move the MantaroBot, position your cursor on the center of the left area of the controller and hold down the left mouse button. Dragging the cursor up will cause the MantaroBot to move forward. The speed will increase as the cursor is moved further from the center. Moving to the right or left will cause the MantaroBot to turn right or left. The further the cursor is moved to the left or right the sharper the turn is made. Similarly, movement in the reverse direction can be made by moving the cursor down the control pad area. The reverse direction speed is limited to 50% of the forward direction speed.

Moving the cursor to the two small circular areas on either the left or right side of the drive pad will cause the MantaroBot to pirouette in place in the direction shown by the arrows.

The MantaroBot can also be controlled using a USB joystick (Windows only). Please see Section 8.2 for more information.

Tip: It is recommended to familiarize yourself with driving the MantaroBot with a mouse first before using it with a joystick (Windows only).

MantaroBot™

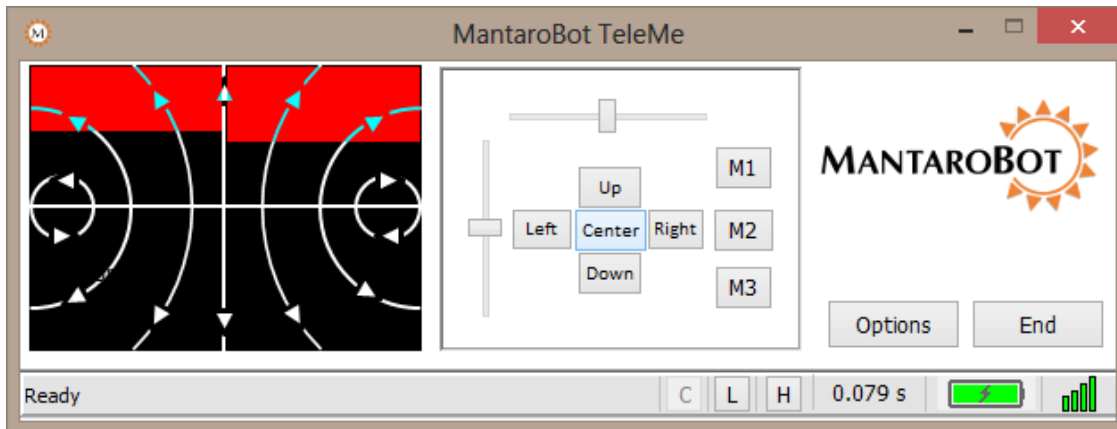
20410 Century Boulevard • Suite 120 • Germantown Maryland 20874

www.MantaroBot.com • info@mantarobot.com

Phone 301 528 2244 • Fax 301 528 1933

7.6.1.2 Proximity IR Sensors

The MantaroBot TeleMe is equipped with two obstacle detecting IR sensors. The sensors detect obstacles approaching the left wheel or the right wheel and will inform the user through the MantaroBot Controller Drive Motor Control Pad. As the left drive wheel of the robot approaches an obstacle in the front, a half white bar will appear on the top left of the Drive Motor Control Pad area (as shown in the following picture), and if the right drive wheel of the robot approaches an obstacle in the front, a half white bar will appear on the top right of the Control Pad area.



Note: To reduce the likelihood of a high speed collision (e.g. driving the MantaroBot into a wall) a feature has been included in the MantaroBot that reduces the robot's forward speed when it detects an obstacle 30 cm ahead of it. Note forward speed is not reduced if the robot is moving slowly. A red area will appear on the pad to indicate that the speed has been limited. These sensors will not detect all types of wall surfaces or prevent the MantaroBot from falling down steps or stairs.

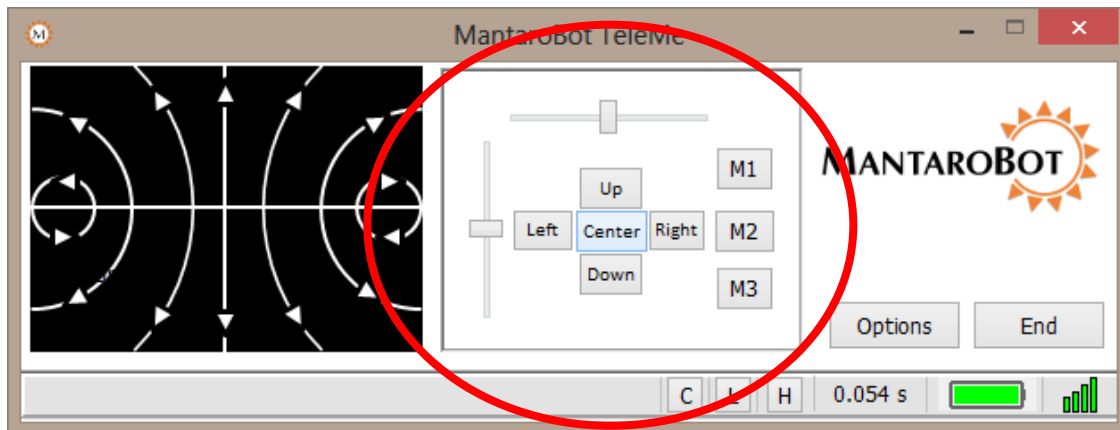
MantaroBot™

20410 Century Boulevard • Suite 120 • Germantown Maryland 20874

www.MantaroBot.com • info@mantarobot.com

Phone 301 528 2244 • Fax 301 528 1933

7.6.2 Camera Control



NOTE: References to “Pan” in this section only apply if your TeleMe is equipped with the factory installed optional Mast with Motorized Pan Mechanism. If your TeleMe does not have this option, the associated control buttons/slider will be grayed out.

7.6.2.1 Pan/Tilt

The Camera Control buttons allow the user to pan/tilt the “head” of the MantaroBot (which has an integrated camera) independently of driving the MantaroBot. This is useful in a meeting environment where you want to observe items or people in the room without driving the MantaroBot around. It is also necessary to look down to avoid obstacles when driving. The camera will move in the direction of the buttons. The “Center” button causes the head to re-center from any position.

Another method of moving the camera is to use the two sliders. The horizontal slider actuates the pan control while the vertical slider actuates the tilt control of the head. This provides users with finer control of the camera and ability to position it in the desired position with one or two drag operations.

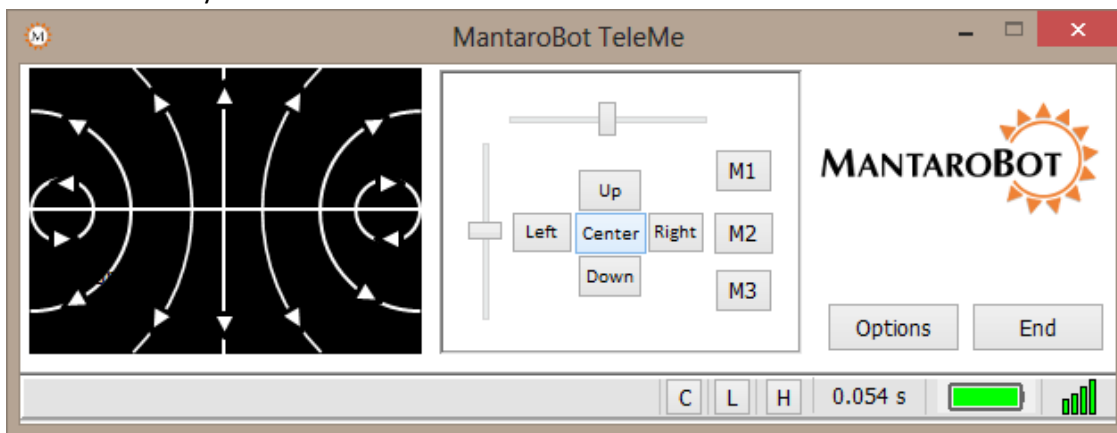
Additionally, the camera can also be controlled with the A-S-D-W-C keys of the keyboard. This is useful for moving the camera with one hand while driving with a mouse in the other.

A = left
D = right
S = down
W = up
C = center

NOTE: The Camera Pan control should be centered prior to moving the MantaroBot. There is also a Controller Setting option to 'Auto-Center' the camera when driving.

7.6.2.2 Memory Positions

Three memory position buttons on the side of the camera control (M1, M2, M3) are provided to save and recall three head (camera) positions for easy pointing of the camera. If your MantaroBot does not have the motorized pan option, the memory buttons can still be used to save/recall the tilt position. To operate the memory buttons, point the camera to the desired position and press the button for 3 seconds to store the present position. The user is notified via a message on the status bar when the position is successfully stored.



Any subsequent clicks of the memory button will point the camera to the stored position and the status bar will indicate that the memory position was recalled.

Additionally, the camera positions can be recalled using the 1, 2, or 3 key on the keyboard. This is useful for recalling previously stored tilt positions with one hand while driving with a mouse in the other.

Note: The keyboard keys can not be used for saving memory positions. They are for only recalling memory positions.

1 = recall M1 camera position

2 = recall M2 camera position

3 = recall M3 camera position

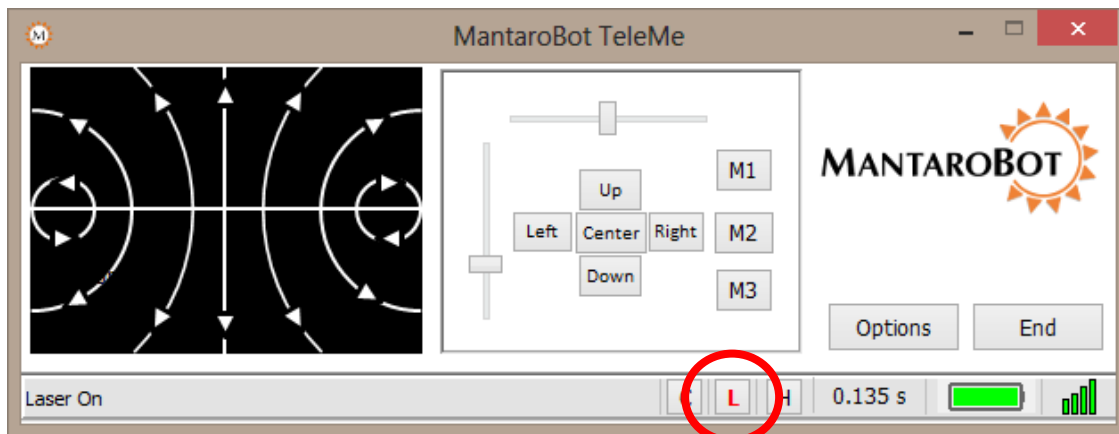
MantaroBot™

20410 Century Boulevard • Suite 120 • Germantown Maryland 20874

www.MantaroBot.com • info@mantarobot.com

Phone 301 528 2244 • Fax 301 528 1933

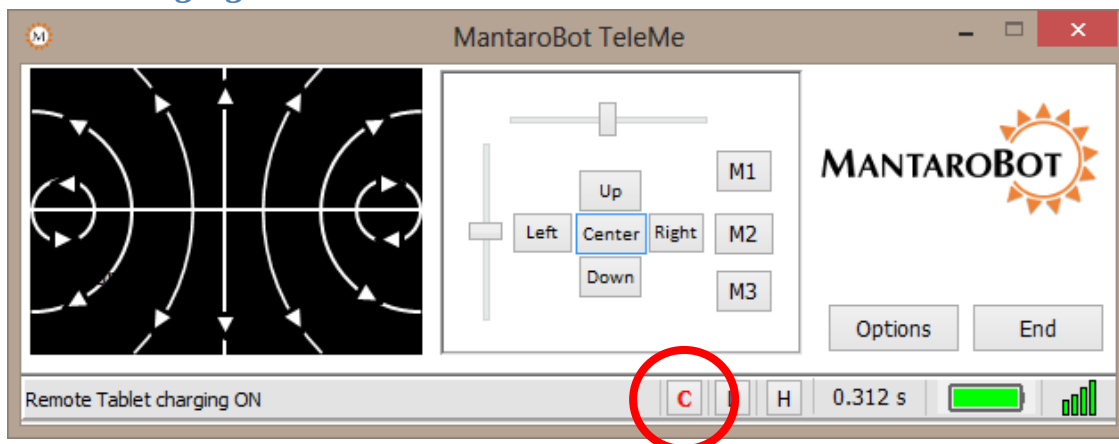
7.6.3 Laser Pointer



If the MantaroBot is equipped with a Laser Pointer the “L” button at the bottom of the Controller window will not be grayed out. Clicking on the “L” with your mouse or alternatively hitting the “L” button on your keyboard will turn the laser on/off. The laser can be pointed by using the Camera Control functions and turning it on while the camera is facing the location of interest.

WARNING: Care must be taken to avoid shining the laser at someone’s eyes. This can be dangerous and may cause permanent eye damage.

7.6.4 Charging User Device

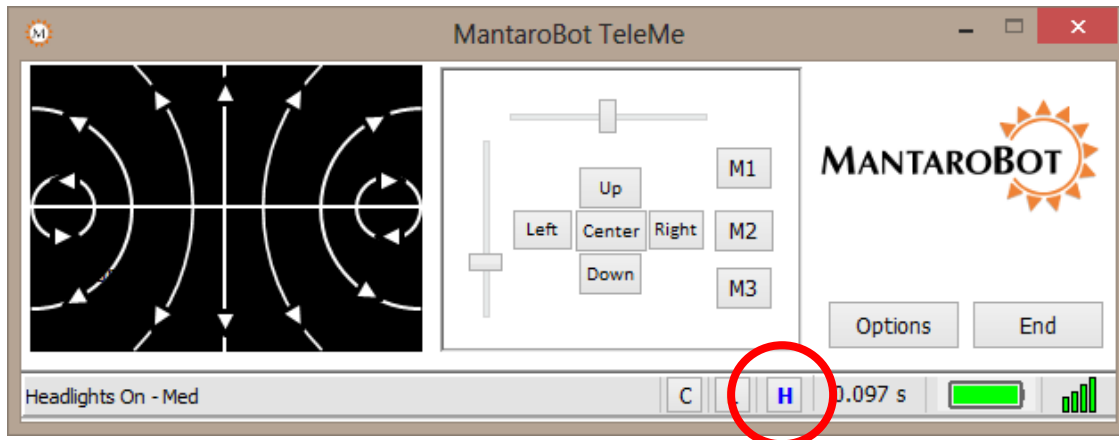


During a call, there may be instances when the internal battery of the TeleMe has plenty of charge but a person local to the TeleMe may notice that the user device plugged into the device holder is running low on charge. In those instances, the remote user has the option to charge the user device (only while the

call is on) by drawing power from the TeleMe's internal battery. To do this, simply click the 'C' at the bottom of the Controller window. When the call ends, the charging of the user device will also end.

If the TeleMe is plugged into a charger, the 'C' will be greyed out as the user device is already being charged.

7.6.5 LED Headlights



If the TeleMe 2 is equipped with LED Headlights, the "H" button at the bottom of the Controller window will be activated. Clicking on the "H" with your mouse or alternatively hitting the "H" button on your keyboard will cycle the LED Headlights from the following states: Low beam – Med beam – High beam - OFF. The color of the "H" button will also cycle through as the button is repeatedly clicked (white – blue – red – black).

The LED Headlights are very useful for driving the TeleMe 2 when the environment around it is poorly lit, especially at night.

7.7 Options – Settings

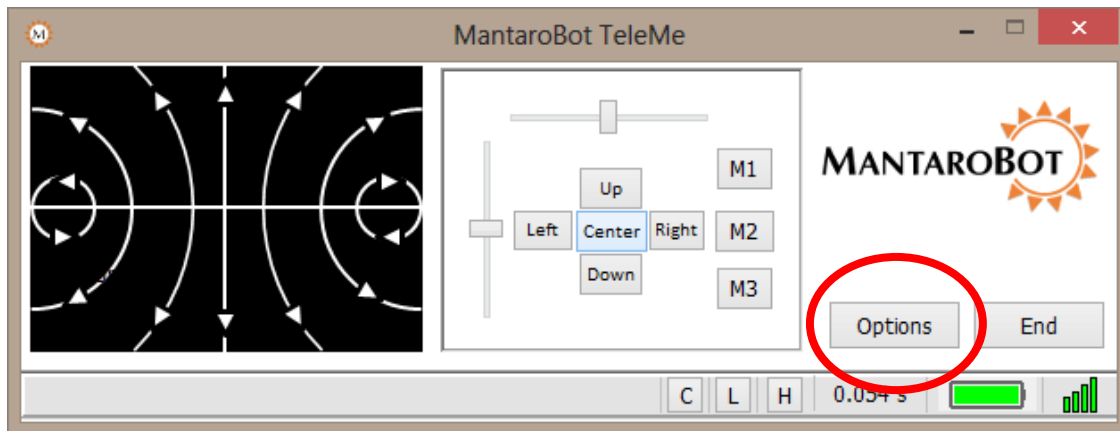
Clicking on 'Options' and then 'Settings' provides three tabs of menus for User Administration, Robot Settings, and Controller Settings. The User Administration and Robot Settings tabs will only appear if the user logged in has administrative privileges.

7.7.1 User Administration

The User Administration tab shows the same functions that were available during configuration mode. This allows administrators to add, delete, or edit users to the MantaroBot it is currently logged into

while using the MantaroBot Controller. In other words, the user credentials can be changed remotely without having to physically go to the MantaroBot location and use the MantaroBot Robot application. This is useful for providing temporary access credentials to a guest or adding a new user. The following steps describe the procedure:

1. Click on the 'Options' button and select 'Settings'.

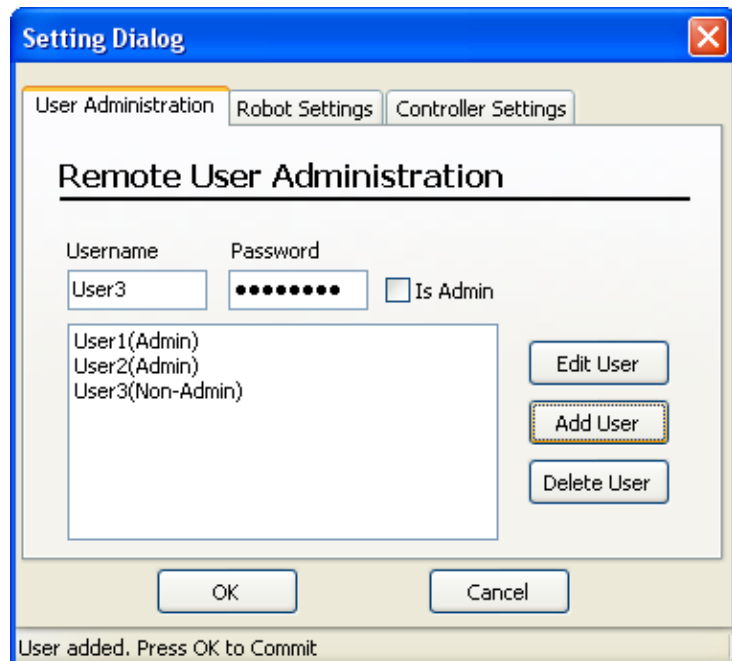


2. Click on the User Administration tab to add or delete users.

3. You will see the current user list in this dialog box. To add a new user, fill in the Username and Password fields. Then select "Is Admin" if the user is to have administrator privileges and click on "Add User".

4. To delete a User, select the user and click "Delete User".

5. To edit a user's information, click on the user and edit his username and password. Once you are done editing press 'Edit User' to make the modification.



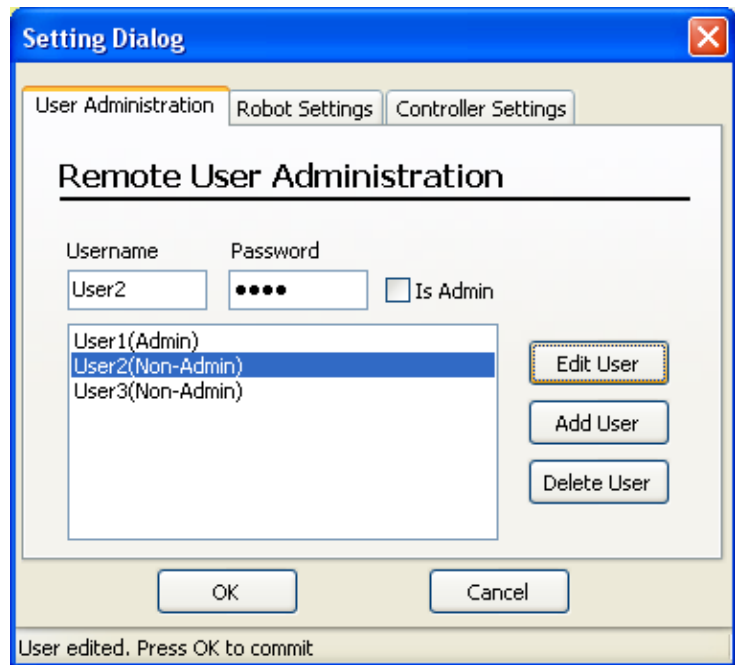
MantaroBot™

20410 Century Boulevard • Suite 120 • Germantown Maryland 20874

www.MantaroBot.com • info@mantarobot.com

Phone 301 528 2244 • Fax 301 528 1933

Note: The changes to 'Add User', 'Delete User', or 'Edit User' are not uploaded and saved to the remote MantaroBot (the robot currently logged into) until the 'OK' button on the bottom of the window is clicked. The message, 'Remote Settings Updated', will appear on the Controller status bar to indicate that the user names and passwords have been stored once the 'OK' button is pressed. If the 'Cancel' button is pressed before the 'OK' button, all changes will be lost!



The screenshot shows a 'Setting Dialog' window with three tabs: 'User Administration', 'Robot Settings', and 'Controller Settings'. The 'User Administration' tab is active, displaying 'Remote User Administration'. It includes fields for 'Username' (containing 'User2') and 'Password' (masked with dots). There is an 'Is Admin' checkbox. Below these is a list box containing 'User1(Admin)', 'User2(Non-Admin)' (which is selected), and 'User3(Non-Admin)'. To the right of the list box are three buttons: 'Edit User', 'Add User', and 'Delete User'. At the bottom of the dialog are 'OK' and 'Cancel' buttons. A status bar at the very bottom reads 'User edited. Press OK to commit'.

MantaroBot™

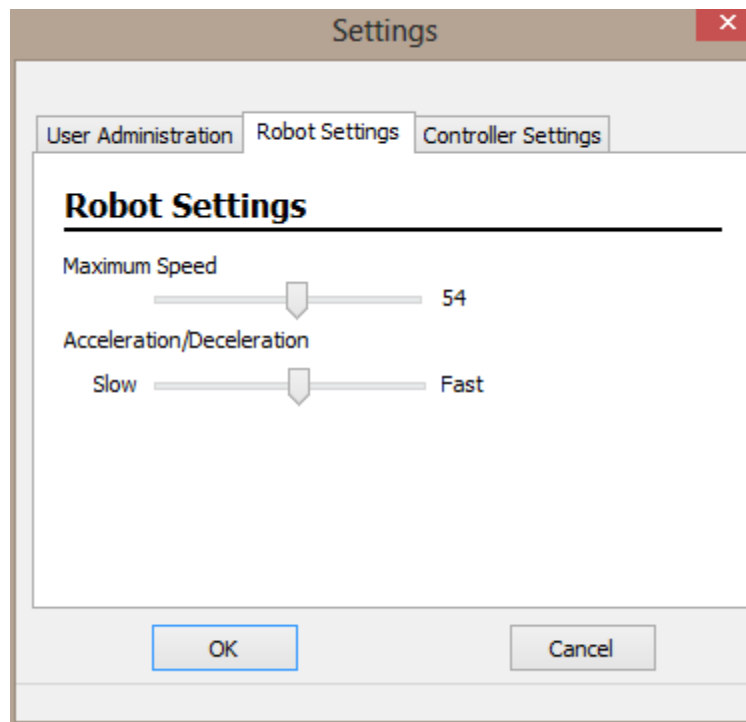
20410 Century Boulevard • Suite 120 • Germantown Maryland 20874

www.MantaroBot.com • info@mantarobot.com

Phone 301 528 2244 • Fax 301 528 1933

7.7.2 Robot Settings

The Robot Settings tab allows administrators to set the maximum speed (value 40 to 100) of the MantaroBot currently logged into as well as the Acceleration/Deceleration of the MantaroBot. Similar to the User Administration tab, changes will not be saved and uploaded to the MantaroBot, until the 'OK' button is pressed.

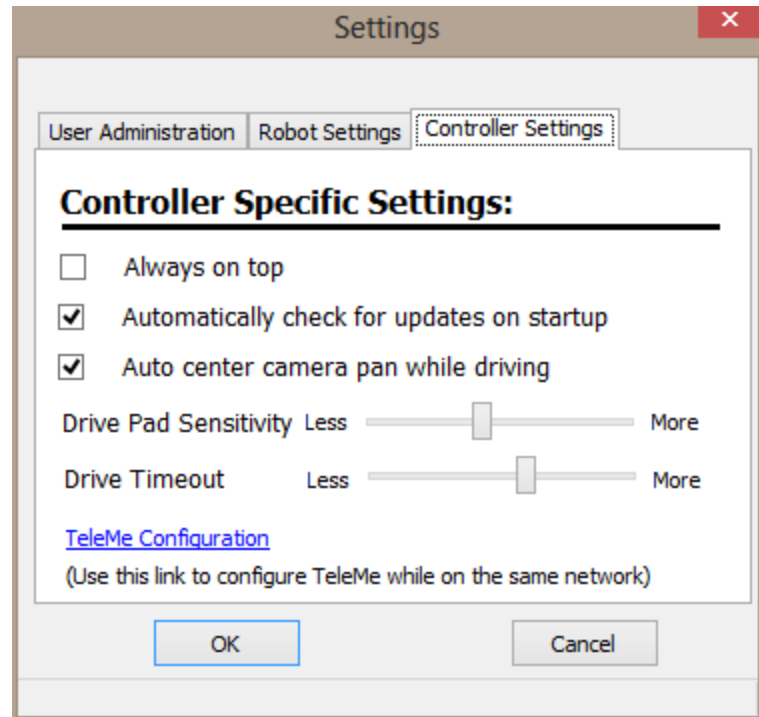


7.7.3 Controller Settings

The Controller Settings tab is accessible to all users and allows the user to configure the settings of the MantaroBot Controller application installed on the remote computer. **NOTE: These settings are not MantaroBot-specific and will apply regardless of which MantaroBot the user is connected to. The Controller Settings tab is also accessible from the 'Options' button on the Login screen.**

The user can:

1. Select if the application window is 'Always on top' or not.
2. Enable/Disable checking for software updates when Controller application launches. Checking for updates for the Robot Application must be done via the "About" button after logging into a MantaroBot. [Default: Enable]
3. Enable/Disable Auto-Centering pan of camera when the MantaroBot is being driven. Enabling the auto-center feature will center the camera in the pan direction once the MantaroBot has reached a predefined speed. The tilt of the camera will not be auto adjusted and will remain under user control to tilt up/down as the user desires. Recalling memory positions while driving the MantaroBot will recall the tilt position only. If the TeleMe is not equipped with the pan feature this setting will not be displayed in the window. [Default: Enable]
4. Set the Drive Pad Sensitivity (turning radius sensitivity) of the Drive Motor Control pad.
5. Drive timeout is a setting related to connection delay. When the Drive timeout crosses the current setting threshold (equal to a certain connection delay value), the MantaroBot will be stopped from moving. Set the drive timeout to be high or low depending on the quality of your connection. If the connection is bad, set the drive timeout to a higher setting to prevent the MantaroBot from stopping drive movements. However, setting the drive timeout to a high setting with a bad connection also means that drive control movements could be quite delayed.



MantaroBot™

20410 Century Boulevard • Suite 120 • Germantown Maryland 20874

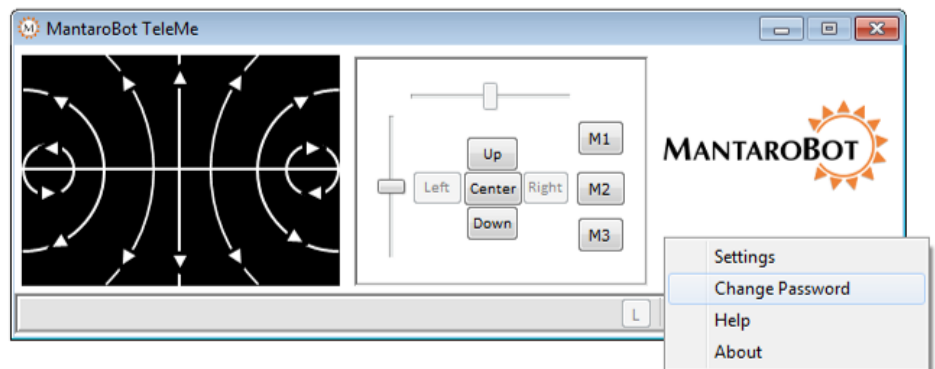
www.MantaroBot.com • info@mantarobot.com

Phone 301 528 2244 • Fax 301 528 1933

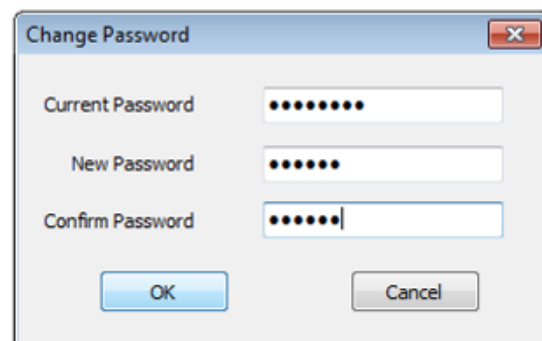
6. If you are logged in and on the same local area network (LAN) as the MantaroBot TeleMe (could be via VPN), the Configuration web pages of the TeleMe can be accessed by clicking on the “TeleMe Configuration” link. This will launch the web browser on your computer.

7.7.4 Change Password

If you wish to change the password while operating the TeleMe, click on “Options” button and then “Change Password”.



The window on the right should then appear, asking you to enter the password of the current user, as well as the desired new password. You must enter the same password in both the “New Password” and “Confirm Password” fields, then click “OK.”



7.8 Options – Help / About / Accessories

7.8.1 Help

The 'Using Controller' window selectable from the 'Options' button currently provides a link to where the latest version of this User Guide resides. The 'About' and 'Accessories' tab can be selected once the Help window is open.

7.8.2 About

The 'About' window selectable from the 'Options' button shows the version number of the MantaroBot Controller application and components of the MantaroBot (if in an active call). When the controller is not logged on to any MantaroBot, the window shows the version number for MantaroBot Controller application only. However, once the call is established, serial number for the MantaroBot and version numbers for the remote MantaroBot's Robot Application, Firmware, Hardware and hardware serial number will be displayed, as well as the device holder type.

This information is useful in any tech support inquiries. This window also provides links to the MantaroBot support site and ability to check for updates. Available updates will be checked for the MantaroBot Controller and if in a call, will also check for updates for the MantaroBot itself. **Note: Updates that are available for the MantaroBot Robot Application can only be installed by a user local to the MantaroBot.**



MantaroBot™

20410 Century Boulevard • Suite 120 • Germantown Maryland 20874

www.MantaroBot.com • info@mantarobot.com

Phone 301 528 2244 • Fax 301 528 1933

7.8.3 Accessories

The 'Accessories' window is accessible by first selecting 'Help' or 'About' from the 'Options' button on the Controller application. Then click on the 'Accessories' tab at the top. This window lists all of the accessories for the MantaroBot the user is currently logged into. Based on the accessories that are present (absent), the Controller application will enable (grey out) certain features or enable (remove) certain graphics (e.g. user will not see a pan camera slider if there is no Mast with Motorized Pan Mechanism installed). **NOTE: Optional Extended Battery is not considered an accessory and will not be displayed on the Accessories list.**



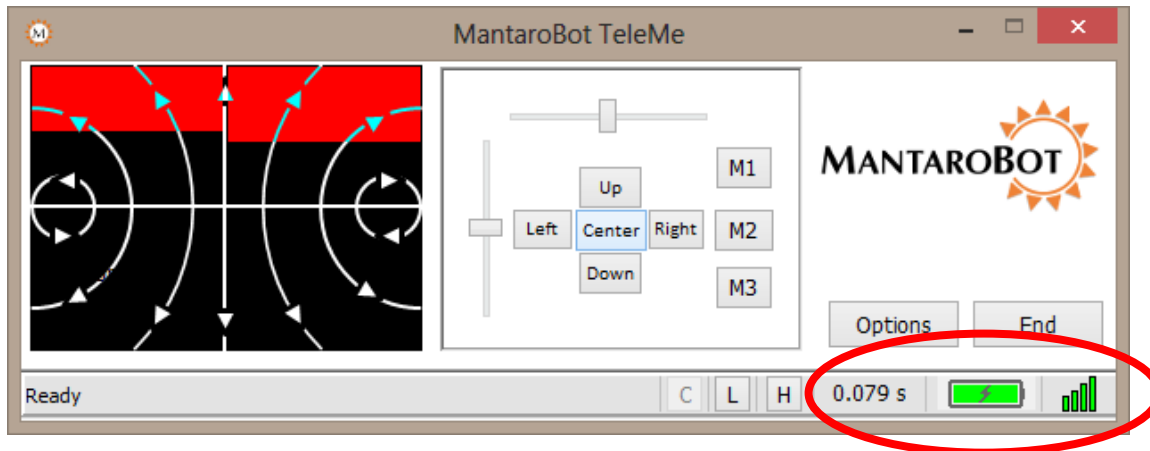
MantaroBot™

20410 Century Boulevard • Suite 120 • Germantown Maryland 20874

www.MantaroBot.com • info@mantarobot.com

Phone 301 528 2244 • Fax 301 528 1933

7.9 Miscellaneous



This section describes the in-call status information provided at the bottom right of the Controller application.

7.9.1 Connection Delay

The Connection Delay displays a measurement of the approximate round trip delay from the MantaroBot Controller application through the network to the MantaroBot. If the network that you are connected to has significant delays you can compensate by moving the MantaroBot slowly or in short movements. Any change you may see in the connection delay over time does not indicate an issue with your MantaroBot. Increasing connection delays only indicates that your wireless and/or internet access is or has become slow.

7.9.2 Battery Indicator

The battery indicator provides status of the internal MantaroBot battery (it does not provide battery status for the user device being used as the “head”). A lightning bolt will display in the indicator when the battery is being charged. When it is not being charged, rolling the mouse over the indicator will provide remaining time information for the battery.

Below a certain battery charge level, the color of the indicator will turn red and the status bar will show a message stating “Battery very low. Charge now!” If the battery reaches a very low voltage, the call will automatically end.

7.9.3 Wifi Meter

The Wifi meter provides Wifi strength information for the location where the MantaroBot is currently located. It is a good idea to keep the MantaroBot away from an area where Wifi coverage is poor, otherwise you may lose connection to the MantaroBot and not be able to regain it. Using the Wifi meter to determine if you are driving into an area with poor coverage will prevent this situation from occurring.

MantaroBot™

20410 Century Boulevard • Suite 120 • Germantown Maryland 20874

www.MantaroBot.com • info@mantarobot.com

Phone 301 528 2244 • Fax 301 528 1933

8 Using 3rd Party Accessories

The MantaroBot can accommodate the use of several third party accessories. One accessory that can be quite useful for those local to the MantaroBot is a Bluetooth® Headset. Another is a USB joystick (Windows only) for the remote user controlling the MantaroBot instead of a mouse. Most user devices used as the head device in the MantaroBot support Bluetooth audio.

8.1 Bluetooth® Headset

In situations where the remote user wants to have a more private conversation (rather than his/her sound coming out of the speakers for everyone to hear), or in noisy environments where the MantaroBot may be located, using a Bluetooth Headset can be very beneficial. Follow the instructions that came with the Bluetooth headset for pairing with your user device (tablet / smartphone).

8.2 Joystick

Instead of using a mouse to control the MantaroBot, a USB joystick (Windows only) can be used as well. The USB joystick must be DirectX compatible.

Note: The USB joystick must be connected prior to launching the MantaroBot Controller Application. The USB joystick does not work with TeleGo.

The buttons of the joystick have been mapped to control the pan/tilt camera as well as the optional laser pointer accessory.

Drive:

Joystick Up = drive forward
Joystick Down = drive reverse
Joystick Right = turn right
Joystick Left = turn left

Pan/Tilt Camera Control:

DirectX Button 1 = tilt down
DirectX Button 2 = pan right
DirectX Button 3 = pan left
DirectX Button 4 = tilt up
DirectX Button 5 = laser on/off
DirectX Button 6 = center pan/tilt
DirectX Button 7, 8, 9, or 10 = headlight low/med/hi/off

9 Maintenance

9.1 Battery Maintenance

The MantaroBot is equipped with a Sealed Lead Acid Battery. The life of this type of Battery is impacted by the depth of discharge. To calibrate the battery life indicator on the MantaroBot properly, the battery should be fully charged the first time the device is connected to a charger or docking station. Then fully discharge the battery by using the MantaroBot normally before charging it again. This process is commonly referred to as battery conditioning, which also ensures that the battery itself will retain the maximum life during each use between charging cycles. This process should only be performed upon use of a new battery including one that is shipped with the MantaroBot initially. If the battery is repeatedly fully discharged the life of the battery will be reduced. The MantaroBot should be fully recharged after each use by connecting it to the charger. The battery charge level can be determined by connecting to the MantaroBot using the MantaroBot Controller Application. When the battery level is indicated at the Battery Low level it should be recharged as soon as possible.

If you are going to store the TeleMe or not use it for an extended period the battery should be fully charged prior to the storage period. After it is fully charged the main power switch on the base should be set to the OFF position. Note that batteries have an inherent self-discharge rate that will fully discharge the battery in several months even if the TeleMe is switched off. Even when not in use the battery should be fully recharged every 3 to 4 months to extend its life.

Note: The MantaroBot should be connected to the charger or Docking Station whenever it is not in use to keep the battery topped off.

NOTE: The extended battery (LiFePO4), if you have purchased one, is restricted from being shipped on passenger airplanes.

9.2 Replacing the Battery

The following steps should be followed should it be necessary to replace the battery.

Note: Pushing the MantaroBot without the Battery installed may damage the control circuitry.

1. Remove the six black screws that hold the plastic enclosure to the base
2. Slide the enclosure up the mast to gain access to the battery.
3. Disconnect battery terminals from the battery. Remove Black first then Red.

MantaroBot™

20410 Century Boulevard • Suite 120 • Germantown Maryland 20874

www.MantaroBot.com • info@mantarobot.com

Phone 301 528 2244 • Fax 301 528 1933



Note: Place electrical tape on the battery terminals to prevent accidental shorting of the battery while it is being removed and handled. Shorting the battery terminals can cause a fire or explosive hazard.

4. Remove 4 nuts holding the battery bracket cover in place.
5. Remove the battery bracket cover and slide the battery up and out.
6. Replace old battery with new battery, put back battery bracket cover and install 4 nuts.
7. Connect the Red wire to the Positive terminal of the battery first then the Black wire to the battery's Negative terminal.
8. Slide the enclosure back down over the battery compartment and install the screws removed in Step #1.
9. Recycle or discard old battery properly.
10. Plug the charger in and charge the battery for at least 8 hours or until fully charged before driving it on battery power. Refer to previous section for more information.

10 Warranty

MantaroBot warrants the TeleMe (excluding the user selected user device plugged into the device holder of the MantaroBot) to be free from malfunctions and defects in both materials and workmanship for 90 days from the date of purchase. If this product is found to be defective within the warranty period, Mantaro will either repair or replace the product. This warranty does not cover circumstances beyond the control of Mantaro. We make no other express or implied warranty for this product. Some states or jurisdictions do not allow exclusion or limitation of incidental or consequential damages, so the above limitation may not apply to you. Some states or jurisdictions do not allow limitations on how long an implied warranty lasts, so the above limitation may not apply to you. This warranty gives you specific rights, and you may have other rights which vary from state to state or by jurisdiction.

To get warranty service please email support@mantaro.com. Before shipping your product to MantaroBot, you must have a Return Merchandise Authorization number. We will not accept the return of a product without an RMA. Any products shipped to us without an RMA will not be refunded or returned. To ensure the safe return of your product, you must use the original packaging to ship back

MantaroBot™
20410 Century Boulevard • Suite 120 • Germantown Maryland 20874
www.MantaroBot.com • info@mantarobot.com
Phone 301 528 2244 • Fax 301 528 1933



the product. If you have discarded your packaging and need to ship the product back for return or repair, please contact support@mantaro.com and we will provide you with factory packaging for a cost plus the cost for us to ship your replacement packaging to you. If you ship your product without using factory packaging, your product may be damaged during shipping. MantaroBot will not cover the cost for products that break due to shipment in non-factory packaging.

MantaroBot™

20410 Century Boulevard • Suite 120 • Germantown Maryland 20874

www.MantaroBot.com • info@mantarobot.com

Phone 301 528 2244 • Fax 301 528 1933

11 Appendix A

11.1 Keyboard Mapping

Below is a map for all the keyboard shortcuts that can be used to control the MantaroBot.

Pan/Tilt Camera Control:

A = pan left 1 = recall M1 camera position
D = pan right 2 = recall M2 camera position
S = tilt down 3 = recall M3 camera position
W = tilt up
C = center camera

Laser Pointer:

L = laser on/off

LED Headlights:

H = headlights low/med/high/off

11.2 Joystick Mapping

Below is a map for all the DirectX compatible USB joystick buttons (Windows only) that can be used to control the MantaroBot using the desktop installable MantaroBot controller application.

Drive:

Joystick Up = drive forward
Joystick Down = drive reverse
Joystick Right = turn right
Joystick Left = turn left

Pan/Tilt Camera Control:

DirectX Button 1 = tilt down
DirectX Button 2 = pan right
DirectX Button 3 = pan left
DirectX Button 4 = tilt up
DirectX Button 5 = laser on/off
DirectX Button 6 = center pan/tilt
DirectX Button 7, 8, 9, or 10 = headlights low/med/high/off